

# Input impedance matching with fully differential amplifiers

By Jim Karki

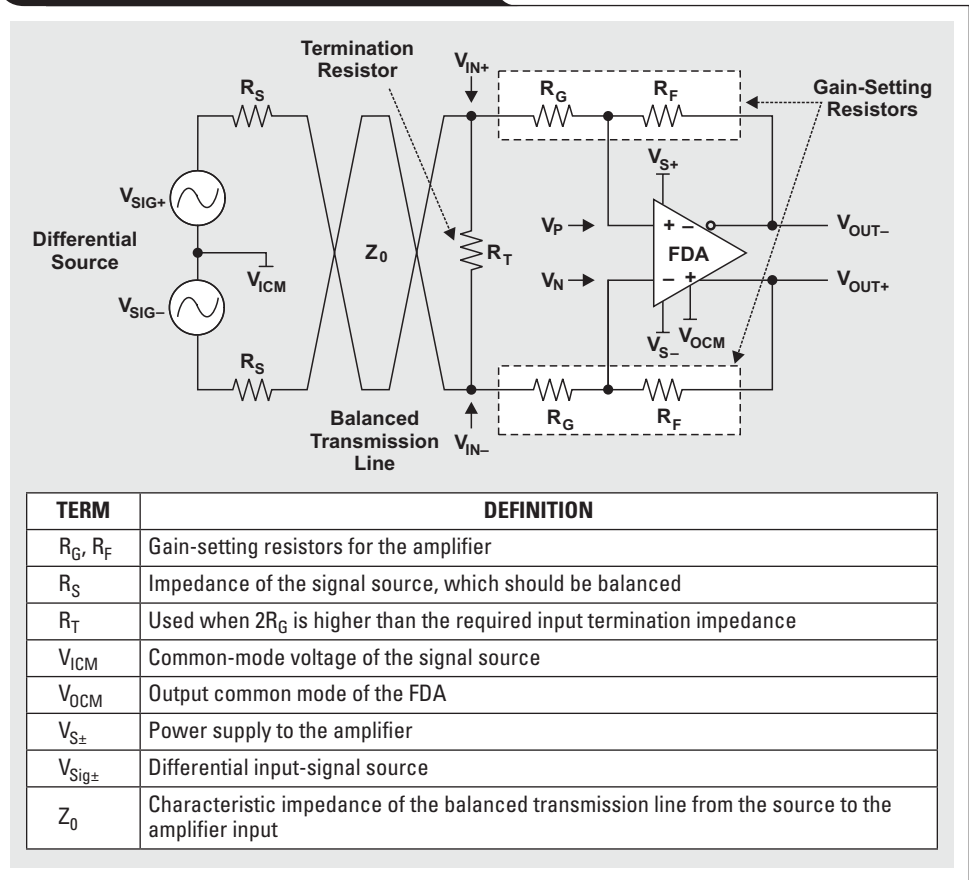
Member, Technical Staff, High-Performance Analog

## Introduction

Impedance matching is widely used in the transmission of signals in many end applications across the industrial, communications, video, medical, test, measurement, and military markets. Impedance matching is important to reduce reflections and preserve signal integrity. Proper termination results in greater signal integrity with higher throughput of data and fewer errors. Different schemes have been employed; source termination, load termination, and double termination are the most commonly used. Double termination is generally recognized as the best method to reduce reflections, while source and load termination have the advantage of increased signal swing. With source and load termination, either the source or the load (not both) is terminated with the characteristic impedance of the transmission line. With double termination, both the source and the load are terminated with that impedance. No matter what impedance-matching scheme is chosen, the termination impedance to implement must be accurately calculated.

In the last few years, fully differential amplifiers (FDAs) have grown in popularity; and, while similar in theory to inverting operational amplifiers, they have important differences that need to be understood when input impedance matching is considered. This article shows how to analyze the input impedance of an FDA. Circuit analysis is performed to aid understanding of the key design points, and a methodology is presented to illustrate how to approach the design variables and calculate component values. A spreadsheet and TINA-TI™ SPICE models are available as design aids.

Figure 1. FDA with differential source



## FDA circuit overview

FDAs are broadband, DC-coupled amplifiers for balanced differential signals and have a unique ability to convert broadband, DC-coupled, single-ended signals into balanced differential signals.

The input-impedance analysis of FDAs is very similar to that of two inverting operational amplifiers. The key difference is that with two inverting operational amplifiers, the input common-mode voltage is controlled by the voltage applied to the positive input; while with FDAs, the output common-mode voltage is controlled via a second loop contained within the amplifier. If the input is differential, the analysis is just as easy for an FDA as for an inverting op-amp circuit, but more difficult when the input is single-ended.

For maximum performance, the FDA must be balanced, which again is easier to analyze if the input is differential.

Due to this, we will first look at the input impedance in the differential case and then use that as a starting point to consider the single-ended case.

The fundamentals of FDA operation are presented in Reference 1. Please refer to it for voltage definitions, gain equations, derivations, and terminology.

### Analysis of differential-signal input

A differential drive and termination into an FDA is shown in Figure 1. An FDA works using negative feedback around the main loop of the amplifier, which tends to drive the error voltage across the input terminals,  $V_N$  and  $V_P$ , to zero, depending on the loop gain.

For analysis, it is convenient to assume that the FDA is an ideal amplifier with no offset and infinite gain. Looking at the input of the amplifier differentially and using the virtual-short concept (Figure 2) from an inverting-amplifier topology, we can express the input impedance as  $Z_{IN} = R_T \parallel 2R_G$ .

For an example of how to select the value of  $R_T$ , let's look at a differential source driving a twisted pair to the FDA.  $Z_0 = 100 \Omega$  is common for twisted-pair cables. For double termination, we want the source to provide  $R_S = 50 \Omega$  on each side for 100- $\Omega$  differential output impedance, and we want the input of the FDA to present a 100- $\Omega$  differential load. If  $R_G = 402 \Omega$ , we then need  $R_T$  to be 114.2  $\Omega$ ; so we select the nearest standard value, 115  $\Omega$ , for  $R_T$ .

The gain of the circuit from the differential source is

$$\frac{V_{SIG\pm}}{V_{OUT\pm}} = \left( \frac{R_T \parallel 2R_G}{R_T \parallel 2R_G + 2R_S} \right) \left( \frac{R_F}{R_G} \right). \quad (1)$$

If we assume that the input impedance matches the source impedance, then

$$\frac{V_{SIG\pm}}{V_{OUT\pm}} = \left( \frac{1}{2} \right) \left( \frac{R_F}{R_G} \right). \quad (2)$$

It is standard practice to take the gain from the terminated input, in which case

$$\frac{V_{IN\pm}}{V_{OUT\pm}} = \left( \frac{R_F}{R_G} \right). \quad (3)$$

It is recommended that  $R_F$  be limited to a range of values for best performance. A resistance value that is too high will add excess noise and possibly interact with parasitic board capacitance to reduce the bandwidth of the amplifier; a value that is too low will load the output, causing increased distortion. Therefore, we need to pick a range of desired values for  $R_F$  and calculate  $R_G$  for the desired gain. For example, the THS4509 performs best with  $R_F$  in the range of 300 to 500  $\Omega$ . So, depending on the gain we want from the FDA, there will come a point where  $2R_G$  equals the required termination of the transmission line. In this case, no  $R_T$  resistor is required.

In design, the target gain and  $Z_0$  are set by the system design. We select the value of  $R_F$  first, then calculate  $R_T$  and  $R_G$  to match the gain and make  $Z_{IN} = Z_0$ . This is easily done by setting up the equations in a spreadsheet. To see

Figure 2. Balanced input impedance

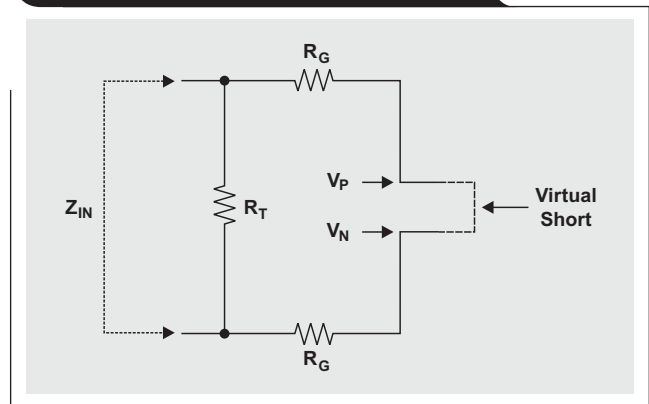
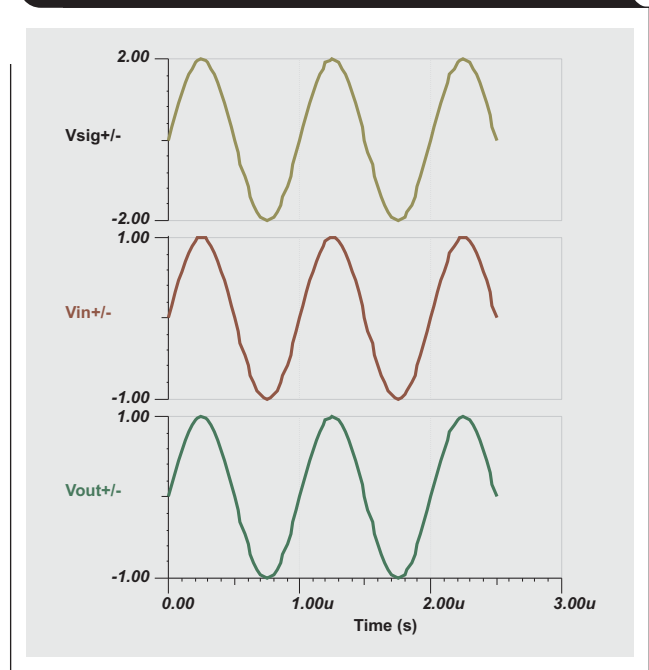


Figure 3. TINA-TI simulation of FDA waveforms with differential input impedance



an example Excel® worksheet, click on the Attachments tab or icon on the left side of the Adobe® Reader® window. Open the file FDA\_Input\_Impedance.xls, then select the Differential Input worksheet tab.

SPICE simulation is a great way to validate the design. To see a TINA-TI simulation circuit of the example just given, click on the Attachments tab or icon on the left side of the Adobe Reader window. If you have the TINA-TI software installed, you can open the file FDA\_Diff\_Input\_Impedance.TSC to view the circuit example. To download and install the free TINA-TI software, visit [www.ti.com/tina-ti](http://www.ti.com/tina-ti) and click the Download button.

There are numerous ways to find the input impedance in SPICE, but from the simulation waveforms shown in Figure 3, we see the expected input and output voltages for double termination with equal impedances.

### Analysis of single-ended signal input

In Figure 4, the differential source circuit shown in Figure 1 is modified for a single-ended, DC-coupled source. To keep balance in the circuit, the source is converted to a single-ended source referenced to  $V_{ICM}$ ;  $R_T$  is split into two resistors of equal value with the center point tied to ground; and the negative input is tied to  $V_{ICM}$  via  $R_S$ .

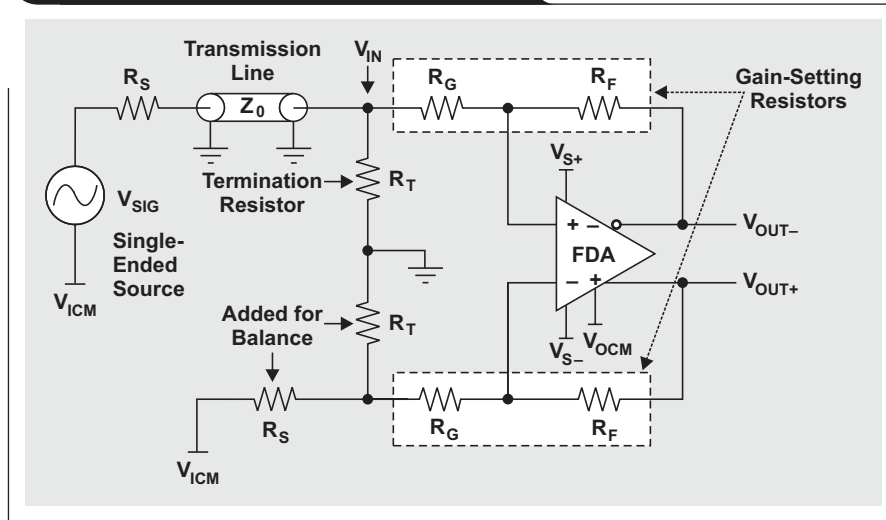
Another scenario is when the source is an RF, IF, or CATV-type class-A amplifier that is designed with intrinsic output impedance. With this type of amplifier, AC coupling of the outputs is usually required via a DC-blocking capacitor to avoid disturbing the DC bias point of the amplifier. In this case,  $R_T$  on the positive side and  $R_{EQ} = R_G + R_S \parallel R_T$  on the negative side (where  $R_S$  is the output impedance of

the RF/IF/CATV amplifier) should be tied to ground via a DC-blocking capacitor of the same size. This is shown in Figure 5. Note that in this configuration the FDA will self-bias input and output pins to the common-mode voltage set by the  $V_{OCM}$ .

In actual implementation, the source may be DC-coupled (Figure 4) and have a common-mode reference that is not ground. In this case, care must be taken to tie  $R_S$  to the same common reference for balance. Also note that DC current will flow in  $R_T$  when tied to ground. When a source is DC-coupled with a ground-referenced source,  $R_S$  and  $R_T$  on the negative side should be tied to ground.

The last scenario makes the circuit analysis easier and will provide the solution for the other scenarios as well.

**Figure 4. FDA with single-ended source**



**Figure 5. FDA with AC-coupled RF/IF/CATV amplifier input**

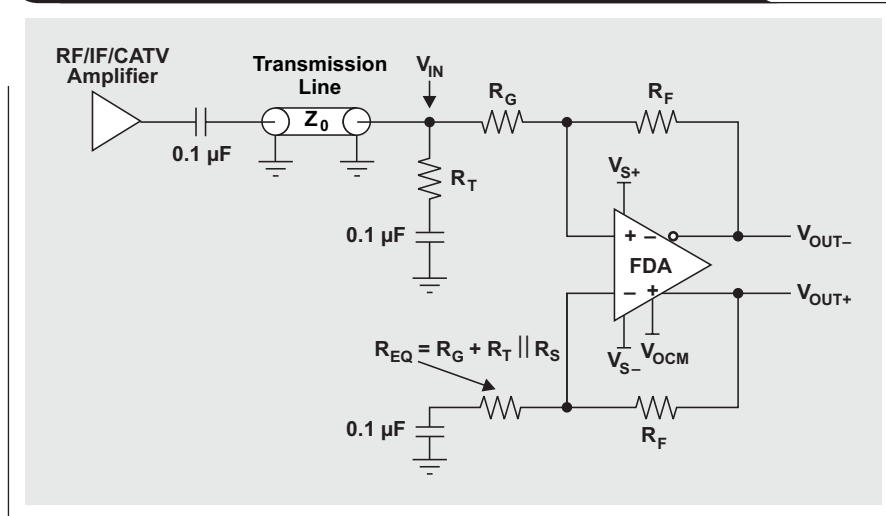


Figure 6 shows the case where the source is ground-referenced and  $R_S$  and  $R_T$  are combined with  $R_G$  into one resistor of equivalent value,  $R_{EQ} = R_G + R_T \parallel R_S$ , which is tied to ground. We will base the analysis of the input impedance on this circuit.

With single-ended input, only one side of the FDA is actively driven, and the other side is grounded (or tied to some reference as discussed earlier). With this scenario, the input pins of the amplifier are not fixed at a DC voltage but will have an AC component. So even though the error voltage across the inputs is driven to zero by the action of the amplifier, we can no longer use the virtual-short concept to derive the input impedance. Instead we must use an alternate, more complex method.

The first step in analyzing the circuit is to break it along the center vertical axis into positive and negative input sides. Then the positive side is converted to its Thevenin equivalent so the circuit can be analyzed and a solution can be developed. Finally, the components on the negative side are balanced to make sure the amplifier gives balanced output. In the positive side of the circuit shown in Figure 7,

$$Z_{IN} = \frac{V_{IN}}{I_{IN}} \parallel R_T = Z_A \parallel R_T. \quad (4)$$

The Thevenin equivalent of the positive side is shown in Figure 8. In this circuit,

$$I_{IN} = \frac{V_{IN} - V_{OUT-}}{R_F + R_G}. \quad (5)$$

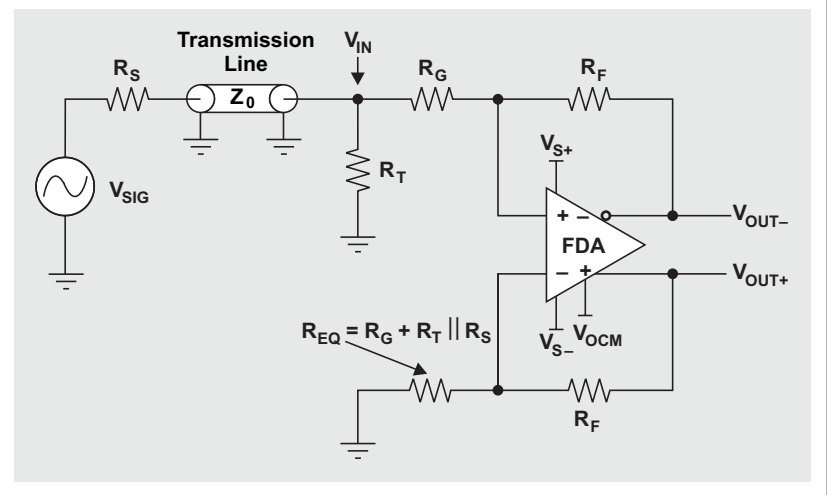
We can treat  $V_{IN}$  as a summing node, or solve the node equation to get

$$V_{IN} = \frac{V_{SIG} \left( \frac{R_T}{R_S + R_T} \right) (R_G + R_F) + V_{OUT-} (R_S \parallel R_T)}{R_G + R_F + R_S \parallel R_T}. \quad (6)$$

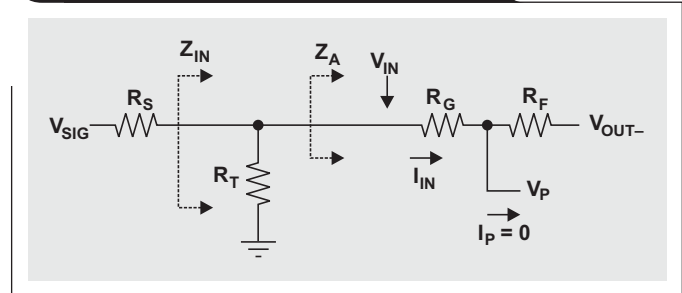
At this point we make use of Equation 12 for output voltage from page 10 of Reference 1, with simplification and some slight changes in nomenclature. In the analysis we need to find  $V_{OUT-}$  in relation to  $V_{IN}$ , so  $\beta_+$  will be used here in place of  $\beta_1$  for the feedback factor in the Thevenin equivalent of the positive side. For the feedback factor of the negative side,  $\beta_-$  will be used in place of  $\beta_2$ . To clarify, the different terms that arise for the feedback factors are artifacts of the analysis, and in reality the circuit will have balanced feedback factors as long as  $R_{EQ} = R_G + R_T \parallel R_S$ . Let's also zero out  $V_{OCM}$  because it is a DC level, and zero out  $V_{IN-}$  because we grounded the input to the negative side of the amplifier.

With these changes in nomenclature, and substituting the Thevenin equivalent shown earlier, we can derive the

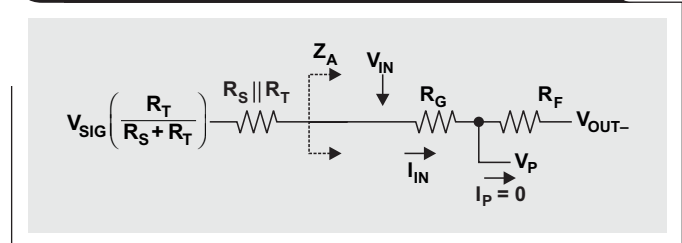
**Figure 6. FDA with DC-coupled, single-ended source referenced to ground**



**Figure 7. Positive side of FDA circuit**



**Figure 8. Thevenin equivalent of positive side**



equation for only the amplifier's AC or signal response to  $V_{OUT-}$ , which we will call  $V_{OUT- (AC \text{ only})}$ :

$$V_{OUT- (AC \text{ only})} = \frac{- \left[ V_{SIG} \left( \frac{R_T}{R_S + R_T} \right) \right] (1 - \beta_+)}{\beta_+ + \beta_-}, \quad (7)$$

where

$$\beta_+ = \frac{R_G}{R_F + R_G}, \text{ and } \beta_- = \frac{R_G + (R_S \parallel R_T)}{R_F + R_G + (R_S \parallel R_T)}.$$

With a significant amount of algebra and substitution, we solve for  $Z_A$  and then use Equation 4 to find  $Z_{IN}$ :

$$Z_A = \frac{(R_G + R_F)(\beta_+ + \beta_-)}{\beta_- + 1} \tag{8}$$

The gain from the terminated input to the differential output, assuming the circuit is balanced, is

$$\frac{V_{OUT (Differential)}}{V_{IN}} = 2 \left( \frac{R_F}{R_G + R_S \parallel R_T} \right) \left( \frac{R_T}{R_S + R_T} \right) \tag{9}$$

The output DC common mode is set by the input to  $V_{OCM}$ .

It would be useful to have a closed-form equation to solve for  $R_T$  to satisfy both Equations 8 and 9, but none could be found. One solution is to guess values and iterate, but sometimes that fails to find a solution. A more practical approach is to modify the equations and solve using Equations 10 and 11.

$$\frac{1}{R_T} = \frac{1}{Z_0} - \left[ \frac{1 - GF}{2(1 + GF)} \right] \left( \frac{2GF}{2R_F - Z_0GF} \right), \tag{10}$$

where  $Z_0$  is the desired termination,  $G$  is the target gain from terminated input to output, and  $F$  is a factor less than 1 that depends on the gain and value of  $R_F$ . The result is fed into Equation 11 to solve for  $R_G$ :

$$R_G = \left[ \frac{2R_T R_F}{G(Z_0 + R_T)} \right] - Z_0 \parallel R_T \tag{11}$$

In design, the target gain and  $Z_0$  are set by the system design; and, as noted earlier, it is recommended that  $R_F$  be limited to a range of values for best performance. So we select the value of  $R_F$  first and then try values for  $F$  until  $Z_{IN} = Z_0$ . This is easily done by setting up the equations in a spreadsheet that can simultaneously calculate with incremental values, and then selecting the appropriate values. To see an example Excel worksheet, click on the Attachments tab or icon on the left side of the Adobe Reader window. Open the file `FDA_Input_Impedance.xls`, then select the Single-Ended Input worksheet tab.

For an example of how to select the value of  $R_T$ , let's look at a single-ended source driving a coax to the FDA with  $Z_0 = 50 \Omega$ . For double termination, we want the source to provide  $R_S = 50\text{-}\Omega$  output impedance, and we want the input of the FDA to present a  $50\text{-}\Omega$  single-ended load. Assuming that we want a gain of 1 from the terminated input and that  $R_F = 402 \Omega$ , we can use the spreadsheet to calculate the nearest standard values for  $R_G = 392 \Omega$ ,  $R_T = 54.9 \Omega$ , and  $R_{EQ} = 422 \Omega$ , which gives us  $Z_{IN} = 49.73 \Omega$  and a gain of 1.006 V/V.

Again we use SPICE simulation to validate the design. To see a TINA-TI simulation circuit of the example just given, click on the Attachments tab or icon on the left side of the Adobe Reader window. If you have the TINA-TI software installed, you can open the file `FDA_Single_Ended_Input_Impedance.TSC` to view the circuit example. To download and install the free TINA-TI software, visit [www.ti.com/tina-ti](http://www.ti.com/tina-ti) and click the Download button.

There are numerous ways to find the input impedance in SPICE, but from the simulation waveforms shown in Figure 9, we see the expected input and output voltages for double termination with equal impedances.

### Reference

For more information related to this article, you can download an Acrobat Reader file at [www-s.ti.com/sc/techlit/litnumber](http://www-s.ti.com/sc/techlit/litnumber) and replace "litnumber" with the **TI Lit. #** for the materials listed below.

### Document Title

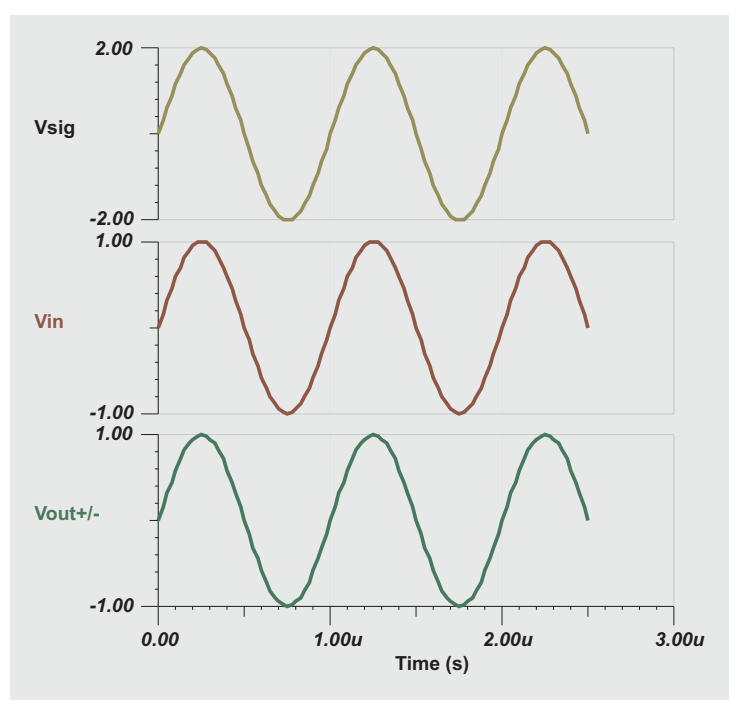
**TI Lit. #**

1. Jim Karki, "Fully Differential Amplifiers," Application Report. . . . . sloa054

### Related Web sites

[amplifier.ti.com](http://amplifier.ti.com)  
[www.ti.com/tina-ti](http://www.ti.com/tina-ti)

**Figure 9. TINA-TI simulation of FDA waveforms with single-ended input impedance**



## IMPORTANT NOTICE

Texas Instruments Incorporated and its subsidiaries (TI) reserve the right to make corrections, modifications, enhancements, improvements, and other changes to its products and services at any time and to discontinue any product or service without notice. Customers should obtain the latest relevant information before placing orders and should verify that such information is current and complete. All products are sold subject to TI's terms and conditions of sale supplied at the time of order acknowledgment.

TI warrants performance of its hardware products to the specifications applicable at the time of sale in accordance with TI's standard warranty. Testing and other quality control techniques are used to the extent TI deems necessary to support this warranty. Except where mandated by government requirements, testing of all parameters of each product is not necessarily performed.

TI assumes no liability for applications assistance or customer product design. Customers are responsible for their products and applications using TI components. To minimize the risks associated with customer products and applications, customers should provide adequate design and operating safeguards.

TI does not warrant or represent that any license, either express or implied, is granted under any TI patent right, copyright, mask work right, or other TI intellectual property right relating to any combination, machine, or process in which TI products or services are used. Information published by TI regarding third-party products or services does not constitute a license from TI to use such products or services or a warranty or endorsement thereof. Use of such information may require a license from a third party under the patents or other intellectual property of the third party, or a license from TI under the patents or other intellectual property of TI.

Reproduction of information in TI data books or data sheets is permissible only if reproduction is without alteration and is accompanied by all associated warranties, conditions, limitations, and notices. Reproduction of this information with alteration is an unfair and deceptive business practice. TI is not responsible or liable for such altered documentation. Information of third parties may be subject to additional restrictions.

Resale of TI products or services with statements different from or beyond the parameters stated by TI for that product or service voids all express and any implied warranties for the associated TI product or service and is an unfair and deceptive business practice. TI is not responsible or liable for any such statements.

TI products are not authorized for use in safety-critical applications (such as life support) where a failure of the TI product would reasonably be expected to cause severe personal injury or death, unless officers of the parties have executed an agreement specifically governing such use. Buyers represent that they have all necessary expertise in the safety and regulatory ramifications of their applications, and acknowledge and agree that they are solely responsible for all legal, regulatory and safety-related requirements concerning their products and any use of TI products in such safety-critical applications, notwithstanding any applications-related information or support that may be provided by TI. Further, Buyers must fully indemnify TI and its representatives against any damages arising out of the use of TI products in such safety-critical applications.

TI products are neither designed nor intended for use in military/aerospace applications or environments unless the TI products are specifically designated by TI as military-grade or "enhanced plastic." Only products designated by TI as military-grade meet military specifications. Buyers acknowledge and agree that any such use of TI products which TI has not designated as military-grade is solely at the Buyer's risk, and that they are solely responsible for compliance with all legal and regulatory requirements in connection with such use.

TI products are neither designed nor intended for use in automotive applications or environments unless the specific TI products are designated by TI as compliant with ISO/TS 16949 requirements. Buyers acknowledge and agree that, if they use any non-designated products in automotive applications, TI will not be responsible for any failure to meet such requirements.

Following are URLs where you can obtain information on other Texas Instruments products and application solutions:

<b>Products</b>		<b>Applications</b>	
Amplifiers	<a href="http://amplifier.ti.com">amplifier.ti.com</a>	Audio	<a href="http://www.ti.com/audio">www.ti.com/audio</a>
Data Converters	<a href="http://dataconverter.ti.com">dataconverter.ti.com</a>	Automotive	<a href="http://www.ti.com/automotive">www.ti.com/automotive</a>
Clocks and Timers	<a href="http://www.ti.com/clocks">www.ti.com/clocks</a>	Broadband	<a href="http://www.ti.com/broadband">www.ti.com/broadband</a>
DSP	<a href="http://dsp.ti.com">dsp.ti.com</a>	Digital control	<a href="http://www.ti.com/digitalcontrol">www.ti.com/digitalcontrol</a>
Interface	<a href="http://interface.ti.com">interface.ti.com</a>	Medical	<a href="http://www.ti.com/medical">www.ti.com/medical</a>
Logic	<a href="http://logic.ti.com">logic.ti.com</a>	Military	<a href="http://www.ti.com/military">www.ti.com/military</a>
Power Mgmt	<a href="http://power.ti.com">power.ti.com</a>	Optical Networking	<a href="http://www.ti.com/opticalnetwork">www.ti.com/opticalnetwork</a>
Microcontrollers	<a href="http://microcontroller.ti.com">microcontroller.ti.com</a>	Security	<a href="http://www.ti.com/security">www.ti.com/security</a>
RFID	<a href="http://www.ti-rfid.com">www.ti-rfid.com</a>	Telephony	<a href="http://www.ti.com/telephony">www.ti.com/telephony</a>
RF/IF and ZigBee® Solutions	<a href="http://www.ti.com/lprf">www.ti.com/lprf</a>	Video and Imaging	<a href="http://www.ti.com/video">www.ti.com/video</a>
		Wireless	<a href="http://www.ti.com/wireless">www.ti.com/wireless</a>

Mailing Address: Texas Instruments  
Post Office Box 655303  
Dallas, Texas 75265



# TI Worldwide Technical Support

---

## Internet

### TI Semiconductor Product Information Center Home Page

[support.ti.com](http://support.ti.com)

### TI Semiconductor KnowledgeBase Home Page

[support.ti.com/sc/knowledgebase](http://support.ti.com/sc/knowledgebase)

## Product Information Centers

<b>Americas</b>	Phone	+1(972) 644-5580
<b>Brazil</b>	Phone	0800-891-2616
<b>Mexico</b>	Phone	0800-670-7544
	Fax	+1(972) 927-6377
	Internet/Email	<a href="http://support.ti.com/sc/pic/americas.htm">support.ti.com/sc/pic/americas.htm</a>

## Europe, Middle East, and Africa

Phone	
European Free Call	00800-ASK-TEXAS (00800 275 83927)
International	+49 (0) 8161 80 2121
Russian Support	+7 (4) 95 98 10 701

**Note:** The European Free Call (Toll Free) number is not active in all countries. If you have technical difficulty calling the free call number, please use the international number above.

Fax	+ (49) (0) 8161 80 2045
Internet	<a href="http://support.ti.com/sc/pic/euro.htm">support.ti.com/sc/pic/euro.htm</a>

## Japan

Fax	International	+81-3-3344-5317
	Domestic	0120-81-0036
Internet/Email	International	<a href="http://support.ti.com/sc/pic/japan.htm">support.ti.com/sc/pic/japan.htm</a>
	Domestic	<a href="http://www.tij.co.jp/pic">www.tij.co.jp/pic</a>

## Asia

Phone	
International	+91-80-41381665
Domestic	<u>Toll-Free Number</u>
Australia	1-800-999-084
China	800-820-8682
Hong Kong	800-96-5941
India	1-800-425-7888
Indonesia	001-803-8861-1006
Korea	080-551-2804
Malaysia	1-800-80-3973
New Zealand	0800-446-934
Philippines	1-800-765-7404
Singapore	800-886-1028
Taiwan	0800-006800
Thailand	001-800-886-0010
Fax	+886-2-2378-6808
Email	<a href="mailto:tiasia@ti.com">tiasia@ti.com</a> or <a href="mailto:ti-china@ti.com">ti-china@ti.com</a>
Internet	<a href="http://support.ti.com/sc/pic/asia.htm">support.ti.com/sc/pic/asia.htm</a>

**Safe Harbor Statement:** This publication may contain forward-looking statements that involve a number of risks and uncertainties. These "forward-looking statements" are intended to qualify for the safe harbor from liability established by the Private Securities Litigation Reform Act of 1995. These forward-looking statements generally can be identified by phrases such as TI or its management "believes," "expects," "anticipates," "foresees," "forecasts," "estimates" or other words or phrases of similar import. Similarly, such statements herein that describe the company's products, business strategy, outlook, objectives, plans, intentions or goals also are forward-looking statements. All such forward-looking statements are subject to certain risks and uncertainties that could cause actual results to differ materially from those in forward-looking statements. Please refer to TI's most recent Form 10-K for more information on the risks and uncertainties that could materially affect future results of operations. We disclaim any intention or obligation to update any forward-looking statements as a result of developments occurring after the date of this publication.

**E093008**

TINA-TI is a trademark of Texas Instruments. Adobe and Reader are registered trademarks of Adobe Systems Incorporated. Excel is a registered trademark of Microsoft Corporation. ZigBee is a registered trademark of the ZigBee Alliance. All other trademarks are the property of their respective owners.

## IMPORTANT NOTICE

Texas Instruments Incorporated and its subsidiaries (TI) reserve the right to make corrections, modifications, enhancements, improvements, and other changes to its products and services at any time and to discontinue any product or service without notice. Customers should obtain the latest relevant information before placing orders and should verify that such information is current and complete. All products are sold subject to TI's terms and conditions of sale supplied at the time of order acknowledgment.

TI warrants performance of its hardware products to the specifications applicable at the time of sale in accordance with TI's standard warranty. Testing and other quality control techniques are used to the extent TI deems necessary to support this warranty. Except where mandated by government requirements, testing of all parameters of each product is not necessarily performed.

TI assumes no liability for applications assistance or customer product design. Customers are responsible for their products and applications using TI components. To minimize the risks associated with customer products and applications, customers should provide adequate design and operating safeguards.

TI does not warrant or represent that any license, either express or implied, is granted under any TI patent right, copyright, mask work right, or other TI intellectual property right relating to any combination, machine, or process in which TI products or services are used. Information published by TI regarding third-party products or services does not constitute a license from TI to use such products or services or a warranty or endorsement thereof. Use of such information may require a license from a third party under the patents or other intellectual property of the third party, or a license from TI under the patents or other intellectual property of TI.

Reproduction of TI information in TI data books or data sheets is permissible only if reproduction is without alteration and is accompanied by all associated warranties, conditions, limitations, and notices. Reproduction of this information with alteration is an unfair and deceptive business practice. TI is not responsible or liable for such altered documentation. Information of third parties may be subject to additional restrictions.

Resale of TI products or services with statements different from or beyond the parameters stated by TI for that product or service voids all express and any implied warranties for the associated TI product or service and is an unfair and deceptive business practice. TI is not responsible or liable for any such statements.

TI products are not authorized for use in safety-critical applications (such as life support) where a failure of the TI product would reasonably be expected to cause severe personal injury or death, unless officers of the parties have executed an agreement specifically governing such use. Buyers represent that they have all necessary expertise in the safety and regulatory ramifications of their applications, and acknowledge and agree that they are solely responsible for all legal, regulatory and safety-related requirements concerning their products and any use of TI products in such safety-critical applications, notwithstanding any applications-related information or support that may be provided by TI. Further, Buyers must fully indemnify TI and its representatives against any damages arising out of the use of TI products in such safety-critical applications.

TI products are neither designed nor intended for use in military/aerospace applications or environments unless the TI products are specifically designated by TI as military-grade or "enhanced plastic." Only products designated by TI as military-grade meet military specifications. Buyers acknowledge and agree that any such use of TI products which TI has not designated as military-grade is solely at the Buyer's risk, and that they are solely responsible for compliance with all legal and regulatory requirements in connection with such use.

TI products are neither designed nor intended for use in automotive applications or environments unless the specific TI products are designated by TI as compliant with ISO/TS 16949 requirements. Buyers acknowledge and agree that, if they use any non-designated products in automotive applications, TI will not be responsible for any failure to meet such requirements.

Following are URLs where you can obtain information on other Texas Instruments products and application solutions:

### Products

Amplifiers	<a href="http://amplifier.ti.com">amplifier.ti.com</a>
Data Converters	<a href="http://dataconverter.ti.com">dataconverter.ti.com</a>
DSP	<a href="http://dsp.ti.com">dsp.ti.com</a>
Clocks and Timers	<a href="http://www.ti.com/clocks">www.ti.com/clocks</a>
Interface	<a href="http://interface.ti.com">interface.ti.com</a>
Logic	<a href="http://logic.ti.com">logic.ti.com</a>
Power Mgmt	<a href="http://power.ti.com">power.ti.com</a>
Microcontrollers	<a href="http://microcontroller.ti.com">microcontroller.ti.com</a>
RFID	<a href="http://www.ti-rfid.com">www.ti-rfid.com</a>
RF/IF and ZigBee® Solutions	<a href="http://www.ti.com/lprf">www.ti.com/lprf</a>

### Applications

Audio	<a href="http://www.ti.com/audio">www.ti.com/audio</a>
Automotive	<a href="http://www.ti.com/automotive">www.ti.com/automotive</a>
Broadband	<a href="http://www.ti.com/broadband">www.ti.com/broadband</a>
Digital Control	<a href="http://www.ti.com/digitalcontrol">www.ti.com/digitalcontrol</a>
Medical	<a href="http://www.ti.com/medical">www.ti.com/medical</a>
Military	<a href="http://www.ti.com/military">www.ti.com/military</a>
Optical Networking	<a href="http://www.ti.com/opticalnetwork">www.ti.com/opticalnetwork</a>
Security	<a href="http://www.ti.com/security">www.ti.com/security</a>
Telephony	<a href="http://www.ti.com/telephony">www.ti.com/telephony</a>
Video & Imaging	<a href="http://www.ti.com/video">www.ti.com/video</a>
Wireless	<a href="http://www.ti.com/wireless">www.ti.com/wireless</a>

Mailing Address: Texas Instruments, Post Office Box 655303, Dallas, Texas 75265  
Copyright © 2008, Texas Instruments Incorporated