

Service Manual

Simplified

COMPACT
disc
DIGITAL AUDIO

MASH*
multi-stage noise shaping

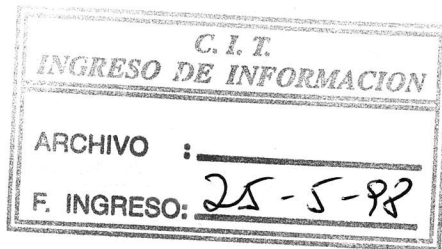
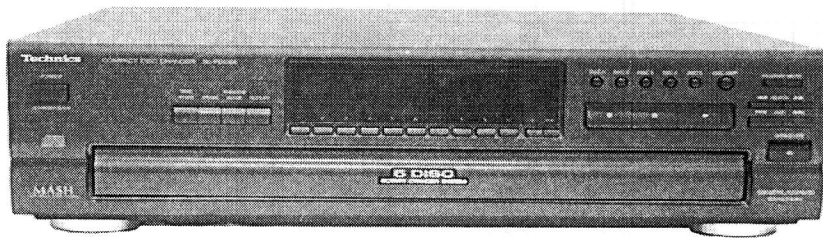
Compact Disc Changer
SL-PD688

Colour

(K) Black Type

Area

Suffix for Model No.	Area	Colour
(E)	Europe.	(K)
(EB)	Great Britain.	
(EG)	Germany and Italy.	
(GC)	Asia, Latin America, Middle Near East and Africa.	
(GN)	Oceania.	



* MASH is a trademark of NTT.

Please file and use this Service Manual together with the Service Manual for Model No. SL-PD687 (E, EB, EG, GC, GN)
Order No. AD9502043C8 , AD9701002S0 and AD9801005S0.

Note : This Simplified Service Manual is provided to indicate the main difference between the original Model No. SL-PD687 (E, EB, EG, GC, GN) and the subsequent Model No. SL-PD688 (E, EB, EG, GC, GN).


⚠ WARNING

This service information is designed for experienced repair technicians only and is not designed for use by the general public. It does not contain warnings or cautions to advise non-technical individuals of potential dangers in attempting to service a product. Products powered by electricity should be serviced or repaired only by experienced professional technicians. Any attempt to service or repair the product or products dealt with in this service information by anyone else could result in serious injury or death.

Technics[®]


© 1998 Matsushita Electronics (S) Pte. Ltd.
All rights reserved. Unauthorized copying and
distribution is a violation of law.

Change In Replacement Parts List

- Notes : * Mentioned in this parts list is the complete replacement parts list for Model No. **SL-PD688 (E,EB,EG,GC,GN)** with reference to model no. SL-PD687 (E,EB,EG,GC,GN).
- * Important safety notice:
Components identified by  mark have special characteristics important for safety.
Furthermore, special parts which have purposes of fire-retardant (resistors), high-quality sound (capacitors), low noise (resistors), etc are used.
When replacing any of these components, be sure to use only manufacturer's specified parts shown in the parts list .
- * [M] Indicates in the Remarks columns indicates parts supplied by **MESA**.
- * Warning : This product uses a laser diode. Refer to caution statements on page 2.
 ACHTUNG : • Die lasereinheit nicht zerlegen.
 • Die lasereinheit darf nur gegen eine vom hersteller spezifizierte einheit ausgetauscht werden.

Ref No.	Part No.	Part Name & Description	Remarks	Ref No.	Part No.	Part Name & Description	Remarks
		CABINET AND CHASSIS					
1	RKM0339-K1	TOP CABINET	[M]	31	RMR0765-W1	TRANSFORMER BASE	[M]
2	SNE2129-3	SCREW	[M]	32	RHM245ZA	MAGNET	[M]
3	XTBS3+8JFZ1	SCREW	[M]	33	RMR0334	FIXED PLATE	[M]
4	RDG0267	TRAY REDUCTION GEAR	[M]	34	RMR0744-W	CLAMP PLATE	[M]
5	RDG0268	LOCK GEAR	[M]	35	RMR0624-W	CLAMPER	[M]
6	RDG0269-3	OPEN/CLOSE GEAR	[M]	36	RMN0185	FL HOLDER	[M]
7	RDV0031	BELT	[M]	37	RFKGLPD688GC	FRONT PANEL ASS'Y	[M]
8	RFKPLPD667PA	TRAY MOTOR ASS'Y	[M]	37-1	RGK0611A-K	FRONT ORNAMENT PLATE	[M]
9	RMN0254	LED HOLDER	[M]	38	RGU1016-K	MAIN BUTTON	[M]
10	RMN0255	SENSOR HOLDER	[M]	39	RGU1019-K	10-KEY BUTTON	[M]
11	RMN0263	MOTOR HOLDER	[M]	40	RGU1015-K	POWER BUTTON	[M]
12	REZ0648	14P FFC	[M]	41	RGU1017-K1J	SUB-BUTTON	[M]
13	RFKNLPD1000E	TRAY ASS'Y	[M]	42	RMG0200	SHUTTER RUBBER	[M]
13-1	RMF0182	TRAY FELT	[M]	43	XTBS26+8J	SCREW	[M]
13-2	RMG0200	SHUTTER RUBBER	[M]	44	XTB3+10JFZ	SCREW	[M]
13-3	RMR0546-W	ROLLER	[M]	45	XTB3+20J	SCREW	[M]
14	RGT0019	ROTARY TRAY	[M]	46	XTB3+8JFZ	SCREW	[M]
15	RHW81001-1	WASHER	[M]			CASSETTE DECK	
16	RMB0365	TRAY SPRING	[M]	101	RDG0270	SPEED REDUCTION GEAR	[M]
17	RME0152-3	LOCK GEAR SPRING	[M]	102	RDG0271	DRIVE GEAR A	[M]
18	RMS0123-1	FIXED PIN B	[M]	103	RDG0272	DRIVE GEAR B	[M]
19	XTB3+10G	SCREW	[M]	104	RDK0025	DRIVE CAM	[M]
20	XTWS3+10T	SCREW	[M]	105	RDP0050	PULLEY GEAR	[M]
21	XWE3D13	WASHER	[M]	106	RFKPLPD667PB	LOADING MOTOR ASS'Y	[M]
23	REE0635	23P FFC	[M]	106-1	RDP0054	MOTOR PULLEY	[M]
24	REE0636-1	FFC WIRE	[M]	106-2	RRD0022	MOTOR	[M]
25	REE0637-1	FFC WIRE	[M]	107	RHD26019	SCREW	[M]
26	RGR0246A-W	REAR PANEL	[M] E	108	RMG0268-K	BELT	[M]
26	RGR0246A-X	REAR PANEL	[M] EB,EG	109	RML0334	CHANGE LEVER	[M]
26	RGR0246A-Y	REAR PANEL	[M] GN	110	RMM0117	SLIDE PLATE 1	[M]
26	RGR0246B-C	REAR PANEL	[M] GC	111	RMM0118	SLIDE PLATE 2	[M]
27	RFKJLPD688PK	BOTTOM CHASSIS ASS'Y	[M]	112	RMR0746-W	STRENGTHENING PLATE	[M]
28	RMR0749-W	CABLE HOLDER	[M]	113	RFKNLPD667PB	MECHANISM BASE ASS'Y	[M]
29	RMR0742-K	BASE GUIDE (L)	[M]	113-1	RMR0747-W	MECHA BASE	[M]
30	RMR0743-K	BASE GUIDE (R)	[M]	113-2	RMS0353	PULLEY SHAFT	[M]

Ref No.	Part No.	Part Name & Description	Remarks	Ref No.	Part No.	Part Name & Description	Remarks
114	RXQ0346-1	SLIDER ASS'Y	[M]	Q852	BA1F4MTA	TRANSISTOR	[M]
115	XTB3+10JFZ	SCREW	[M]	Q853	BN1F4MTA	TRANSISTOR	[M]
116	RAE0152Z	TRAVERSE	[M]				
116-1	SHGD113-1	FLOATING CUSHION	[M]			DIODES	
116-2	SNSD38	TRV MOTOR ASS' SCREW	[M]				
117	RME0109	FLOATING SPRING B	[M]	D11	RL1N4003N02	DIODE	⚠ [M]
118	RME0142	FLOATING SPRING A	[M]	D12	RL1N4003N02	DIODE	⚠ [M]
119	RMR0698-K	TRY CHASSIS	[M]	D13	RL1N4003N02	DIODE	⚠ [M]
120	RMS0123-1	FIXED PIN B	[M]	D14	RL1N4003N02	DIODE	⚠ [M]
121	RMS0350	FIXED PIN A	[M]	D15	MTZJ9R1CTA	DIODE	⚠ [M]
123	RMX0094	TRAY GUIDE	[M]	D16	RL1N4003N02	DIODE	[M]
124	XTN2+6G	PCB SCREW	[M]	D21	RL1N4003N02	DIODE	⚠ [M]
				D22	RL1N4003N02	DIODE	⚠ [M]
		INTEGRATED CIRCUITS		D23	MA4100MTA	DIODE	⚠ [M]
				D24	MA4100MTA	DIODE	⚠ [M]
IC11	LM2940T5M	IC, REGULATOR	⚠ [M]	D31	RL1N4003N02	DIODE	⚠ [M]
IC401	UPD78044A180	IC, MICROCOMPUTER	[M]	D32	RL1N4003N02	DIODE	⚠ [M]
IC501	BA6247N	IC, MOTOR DRIVER	[M]	D33	MA4270MTA	DIODE	⚠ [M]
IC601	RCDHC-278N	IC, REMO-CON SENSOR	[M]	D34	MTZJ9R1CTA	DIODE	⚠ [M]
IC701	AN8837SBE1	IC, HEAD AMP	[M]	D41	MTZJ6R2CTA	DIODE	⚠ [M]
IC702	MN662741RPA	IC, DIGITAL LSI	[M]	D42	RL1N4003N02	DIODE	[M] E,EB,EG
IC703	AN8780NSBE2	IC, MOTOR DRIVER	[M]	D42	RVD1SS133TA	DIODE	[M] GC,GN
IC801	BA4558FDXE2	IC, OP AMP	[M]	D43	1SS291TA	DIODE	[M]
				D44	RL1N4003N02	DIODE	[M] E,EB,EG
		TRANSISTORS		D51	RVD1SS133TA	DIODE	⚠ [M]
				D52	RVD1SS133TA	DIODE	⚠ [M]
Q11	BA1A4PTA	TRANSISTOR	[M]	D53	MTZJ5R1BTA	DIODE	⚠ [M]
Q12	BN1A4PTA	TRANSISTOR	[M]	D54	RVD1SS133TA	DIODE	[M]
Q13	BN1A4PTA	TRANSISTOR	[M]	D401	RVD1SS133TA	DIODE	[M]
Q15	2SD2037ETA	TRANSISTOR	⚠ [M]	D402	RVD1SS133TA	DIODE	[M]
Q16	2SD2037ETA	TRANSISTOR	⚠ [M] GC	D403	RVD1SS133TA	DIODE	[M]
Q21	2SC2785FETA	TRANSISTOR	⚠ [M]	D404	RVD1SS133TA	DIODE	[M]
Q22	2SA1175FETA	TRANSISTOR	⚠ [M]	D405	RVD1SS133TA	DIODE	[M]
Q31	2SB1238Q	TRANSISTOR	⚠ [M]	D406	RVD1SS133TA	DIODE	[M]
Q32	2SD1302STA	TRANSISTOR	[M]	D461	MTZJ6R8CTA	DIODE	[M]
Q33	2SD1302STA	TRANSISTOR	[M]	D462	MTZJ5R6BTA	DIODE	[M]
Q41	2SD1862QTV2	TRANSISTOR	[M]	D501	GL380	DIODE	[M]
Q401	2SC2785FETA	TRANSISTOR	[M]	D502	RSQGP1S53V	DIODE	[M]
Q461	BA1A4ZTA	TRANSISTOR	[M]	D551	SG-206S	DIODE	[M]
Q462	BA1A4ZTA	TRANSISTOR	[M]	D551	SG-206S	DIODE	[M]
Q471	BA1A4PTA	TRANSISTOR	[M]	D606	LN018304P	DIODE	[M]
Q472	2SC2785FETA	TRANSISTOR	[M]	D801	RVD1SS133TA	DIODE	[M]
Q501	PT381	TRANSISTOR	[M]	D802	RVD1SS133TA	DIODE	[M]
Q701	2SA1037AKSTX	TRANSISTOR	[M]	D852	RVD1SS133TA	DIODE	[M]
Q702	DTC114YKA146	TRANSISTOR	[M]				
Q801	2SD1302STA	TRANSISTOR	[M]				
Q802	2SD1302STA	TRANSISTOR	[M]				
Q851	BN1F4MTA	TRANSISTOR	[M]				

Ref No.	Part No.	Part Name & Description	Remarks	Ref No.	Part No.	Part Name & Description	Remarks
		SWITCHES					
S11	RSR4A003S-1H	SW, VOLTAGE ADJ. 	[M] GC	CN20	RJS1A1101T1	TAPING CONNECTOR	[M]
S551	RSH1A005	SW, OPEN/CLOSE	[M]	CN21	RJS1A1101T1	TAPING CONNECTOR	[M]
S601	EVQ21405R	SW, TIME MODE	[M]	CN301	RJS1A9423	FFC CONNECTOR	[M]
S602	EVQ21405R	SW, SPIRAL	[M]	CN401	RJS1A9423	FFC CONNECTOR	[M]
S603	EVQ21405R	SW, RANDOM MODE	[M]	CN402	RJS1A9423	FFC CONNECTOR	[M]
S604	EVQ21405R	SW, REPEAT	[M]	CN403	RJS1A6814-J	FF CONNECTOR	[M]
S607	EVQ21405R	SW, STOP	[M]	CN404	RJS1A6606T1	TAPING CONNECTOR	[M]
S608	EVQ21405R	SW, PAUSE	[M]	CN501	RJS1A6714-Q	14P CONNECTOR	[M]
S609	EVQ21405R	SW, PLAY	[M]	CN551	RJS2A1506	6P CONNECTOR	[M]
S610	EVQ21405R	SW, DISC 1	[M]	CN601	RJS1A6223-1	23P CONNECTOR	[M]
S611	EVQ21405R	SW, DISC 2	[M]	CN602	RJS1A6223-1	23P CONNECTOR	[M]
S612	EVQ21405R	SW, DISC 3	[M]	CN701	RJS2A6016	16P FFC CONNECTOR	[M]
S613	EVQ21405R	SW, DISC 4	[M]	CN702	RJS1A6723-1Q	23P FFC CONNNECTOR	[M]
S614	EVQ21405R	SW, DISC 5	[M]				
S615	EVQ21405R	SW, DISC SKIP	[M]			COILS & TRANSFORMERS	
S616	EVQ21405R	SW, PROGRAM MODE	[M]	L11	SLQX400-D	RADIO FREQ COIL 	[M]
S617	EVQ21405R	SW, R.SEARCH	[M]	L12	SLQX400-D	RADIO FREQ COIL 	[M]
S618	EVQ21405R	SW, F.SEARCH	[M]	PT11	RTP1K4B023-X	POWER TRANSFORMER 	[M] E,EB,EG,GN
S619	EVQ21405R	SW, R.SKIP	[M]	PT11	RTP1K4E030-X	POWER TRANSFORMER 	[M] GC
S620	EVQ21405R	SW, F.SKIP	[M]				
S621	EVQ21405R	SW, OPEN/CLOSE	[M]			COMPONENT COMBINATION	
S631	EVQ21405R	SW, POWER	[M]				
S651	EVQ21405R	SW, NUMERIC 1	[M]	Z301	BL02RN2R65T2	COIL	[M]
S652	EVQ21405R	SW, NUMERIC 2	[M]				
S653	EVQ21405R	SW, NUMERIC 3	[M]			OSCILLATORS	
S654	EVQ21405R	SW, NUMERIC 4	[M]				
S655	EVQ21405R	SW, NUMERIC 5	[M]	X401	RSXY4M23M01T	CRYSTAL RESONATOR	[M]
S656	EVQ21405R	SW, NUMERIC 6	[M]	X701	RSXZ16M9M01T	CERAMIC OSC	[M]
S657	EVQ21405R	SW, NUMERIC 7	[M]				
S658	EVQ21405R	SW, NUMERIC 8	[M]			DISPLAY TUBE	
S659	EVQ21405R	SW, NUMERIC 9	[M]				
S660	EVQ21405R	SW, NUMERIC 10	[M]	FL601	RSL0170-F	FL DISPLAY	[M]
S661	EVQ21405R	SW, NUMERIC >10	[M]				
S662	EVQ21405R	SW, NUMERIC 0	[M]			JACKS	
S701	RSH1A043-U	SW, REST	[M]				
		CONNECTORS					
CN11	RJS1A1101T1	TAPING CONNECTOR	[M]	JK11	SJS9236-1	JK, SOCKET 	[M] E,EB,EG,GC
CN12	RJS1A1101T1	TAPING CONNECTOR	[M] GC	JK11	SJSD16-1	JK, AC INLET 	[M] GN
CN13	RJS1A1101T1	TAPING CONNECTOR	[M] GC	JK801	RJH3201N	JK, RCA	[M]
CN14	RJS1A1101T1	TAPING CONNECTOR	[M]				
CN16	RJS1A1101T1	TAPING CONNECTOR	[M]			FUSE CABLE	
CN17	RJS1A1101T1	TAPING CONNECTOR	[M]	FC502	RWJ4406087KK	6P FLAT CABLE	[M]
CN18	RJS1A1101T1	TAPING CONNECTOR	[M]	FC503	RWJ4403102KK	3P FLAT CABLE	[M]
CN19	RJS1A1101T1	TAPING CONNECTOR	[M]				

Ref No.	Part No.	Part Name & Description	Remarks	Ref No.	Part No.	Part Name & Description	Remarks
		PACKING MATERIALS				ACCESSORIES	
P1	RPG3975	PACKING CASE	[M] E	A1	RQT4489-B	O/I BOOK	[M] E,EB,GC,GN
P1	RPG3976	PACKING CASE	[M] EG	A1	RQT4490-D	O/I BOOK	[M] EG
P1	RPG3977	PACKING CASE	[M] EB	A1	RQT4491-V	O/I BOOK	[M] EG
P1	RPG3978	PACKING CASE	[M] GC	A1	RQT4492-E	O/I BOOK	[M] E,EG
P1	RPG3979	PACKING CASE	[M] GN	A1	RQT4493-G	O/I BOOK	[M] E,GC
P2	RPN0760	POLYFOAM	[M] E,EG,GC	A1	RQT4494-K	O/I BOOK	[M] GC
P2	RPN0772	POLYFOAM	[M] EB,GN	A1	RQT4495-J	O/I BOOK	[M] EG
P4	RPF0139	BAG	[M]	A1	RQT4496-R	O/I BOOK	[M] E
P5	RPF0005	MIRAMAT BAG	[M]	A1	RQT4497-A	O/I BOOK	[M] GC
				A1	RQT4498-R	O/I BOOK	[M] E
				A4	RJA0019-X	AC CORD	⚠ [M] E,EG,GC
				A4	RJA0053-1X	AC CORD	⚠ [M] EB
				A4	RJA0036-K	AC CORD (NZSS & SAA)	⚠ [M] GN
				A5	RJL2P004B08	STEREO CONNECTOR CAB	[M]
				A6	SJP5213-2	AC CORD ADAPTOR	⚠ [M] GC

Resistors & Capacitors

Notes : • Important safety notice:

- Components identified by ⚠ mark have special characteristics important for safety. Furthermore, special parts which have purposes of fire-retardant (resistors), high-quality sound (capacitors), low-noise (resistors), etc. are used. When replacing any of components, be sure to use only manufacturer's specified parts shown in the parts list.
- The parenthesized in the Remarks columns specify the areas. (Refer to the cover page for area.) Parts without these indication can be used for all areas.
- [M] in Remarks column indicates parts that are supplied by MESA.
- Capacitor values are in microfarad (mF) unless specified otherwise, P=Pico-farads (pF) F=Farads (F)
- Resistors values are in ohms, unless specified otherwise, 1k=1,000(OHM), 1M=1,000k(OHM)

Ref No.	Part No.	Values & Remarks	Ref No.	Part No.	Values & Remarks	Ref No.	Part No.	Values & Remarks
	RESISTORS		R31	ERDS2TJ123T	12K 1/4W [M]	R404	ERDS2TJ472T	4.7K 1/4W [M]
R11	ERDS2TJ181T	180 1/4W [M] E,EB,EG,GN	R32	ERDS2TJ103T	10K 1/4W [M]	R405	ERDS2TJ472T	4.7K 1/4W [M]
R11	ERDS2TJ271T	270 1/4W [M] GC	R33	ERDS2TJ103T	10K 1/4W [M]	R406	ERDS2TJ472T	4.7K 1/4W [M]
R12	ERDS2TJ181T	180 1/4W [M] E,EB,EG,GN	R34	ERDS2TJ101T	100 1/4W [M] E,EB,EG	R407	ERDS2TJ472T	4.7K 1/4W [M]
R12	ERDS2TJ271T	270 1/4W [M] GC	R41	ERDS2TJ221T	220 1/4W [M] E,EB,EG	R409	ERDS2TJ102T	1K 1/4W [M]
R13	ERDS2TJ1R0T	1 1/4W [M] GC	R41	ERDS2TJ471T	470 1/4W [M] GC GN	R410	ERDS2TJ103T	10K 1/4W [M]
R14	ERDS2TJ1R0T	1 1/4W [M] GC	R42	ERDS2TJ221T	220 1/4W [M] E,EB,EG	R411	ERDS2TJ472T	4.7K 1/4W [M]
R15	ERDS2TJ1R0T	1 1/4W [M] GC	R43	ERDS2TJ221T	220 1/4W [M] E,EB,EG	R412	ERDS2TJ223T	22K 1/4W [M]
R16	ERDS2TJ1R0T	1 1/4W [M] GC	R44	ERDS2TJ4R7T	4.7 1/4W [M] E,EB,EG	R413	ERDS2TJ103T	10K 1/4W [M]
R17	ERQ16NKWR15E	0.15 1/6W [M] E,EB,EG,⚠	R45	ERDS2TJ4R7T	4.7 1/4W [M] E,EB,EG	R414	ERDS2TJ471T	470 1/4W [M]
R21	ERDS2TJ122T	1.2K 1/4W [M] E,EB,EG,GN	R51	ERDS2TJ122T	1.2K 1/4W [M]	R415	ERDS2TJ103T	10K 1/4W [M]
R21	ERDS2TJ182T	1.8K 1/4W [M] GC	R52	ERDS2TJ122T	1.2K 1/4W [M]	R416	ERDS2TJ102T	1K 1/4W [M]
R22	ERDS2TJ122T	1.2K 1/4W [M] E,EB,EG,GN	R401	ERDS2TJ472T	4.7K 1/4W [M]	R421	ERDS2TJ472T	4.7K 1/4W [M]
R22	ERDS2TJ182T	1.8K 1/4W [M] GC	R402	ERDS2TJ472T	4.7K 1/4W [M]	R461	ERDS2TJ121T	120 1/4W [M] E,EB,EG
			R403	ERDS2TJ472T	4.7K 1/4W [M]	R461	ERDS2TJ271T	270 1/4W [M] GC GN

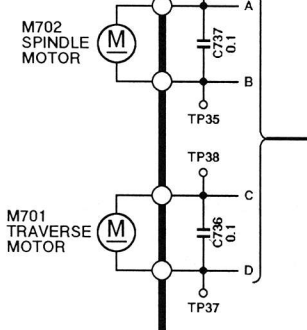
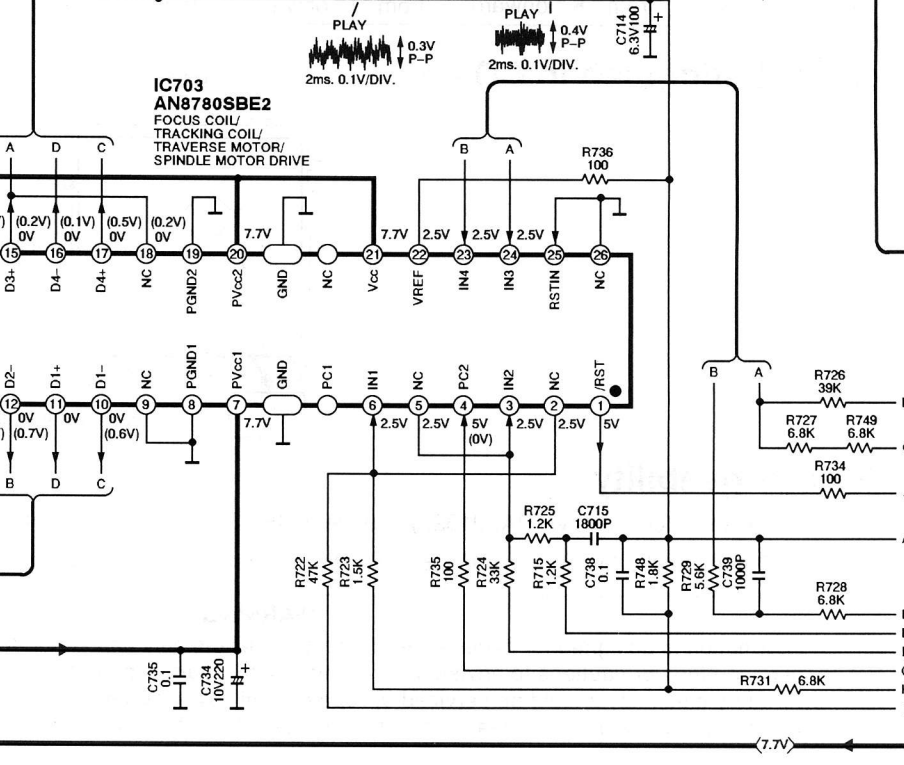
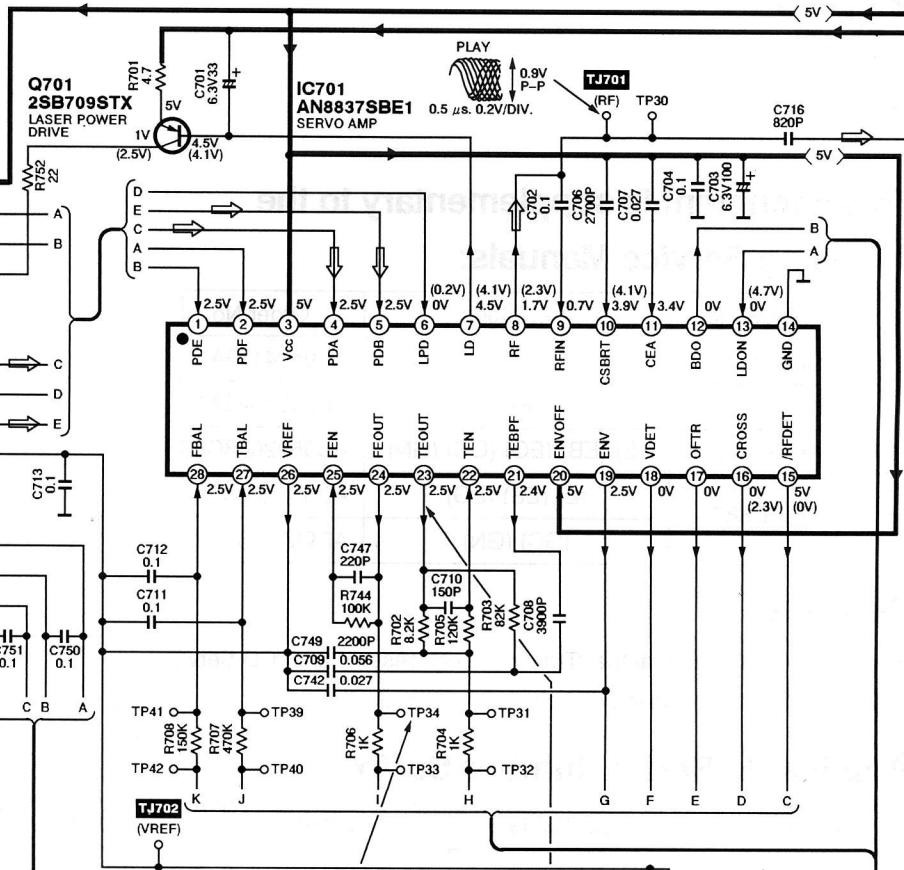
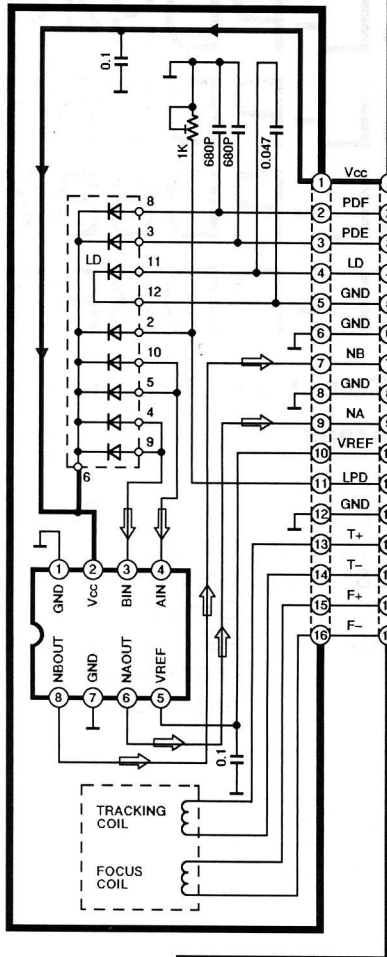
Ref No.	Part No.	Values & Remarks	Ref No.	Part No.	Values & Remarks	Ref No.	Part No.	Values & Remarks
R462	ERDS2TJ221T	220 1/4W [M]	R808	ERDS2TJ123T	12K 1/4W [M]	C701	ECEA0JKA330I	33 6.3V [M]
R463	ERDS2TJ121T	120 1/4W [M] E,EB,EG	R809	ERDS2TJ333T	33K 1/4W [M]	C702	ECUZ1E104MBN	0.1 25V [M]
R471	ERDS2TJ103T	10K 1/4W [M]	R810	ERDS2TJ333T	33K 1/4W [M]	C703	ECEA0JKA101I	100 6.3V [M]
R472	ERDS2TJ121T	120 1/4W [M]	R811	ERDS2TJ333T	33K 1/4W [M]	C704	ECUZ1E104MBN	0.1 25V [M]
R701	ERJ6GEYJ4R7A	4.7 1/10W [M]	R812	ERDS2TJ333T	33K 1/4W [M]	C706	ECUZ1H272KBN	2700P 50V [M]
R702	ERJ6GEYJ822A	8.2K 1/10W [M]	R813	ERDS2TJ102T	1K 1/4W [M]	C707	ECUZ1E273KBN	0.027 25V [M]
R703	ERJ6GEYJ823A	82K 1/10W [M]	R814	ERDS2TJ102T	1K 1/4W [M]	C708	ECUZ1H392KBN	3900P 50V [M]
R704	ERJ6GEYJ102A	1K 1/10W [M]	R815	ERDS2TJ102T	1K 1/4W [M]	C709	ECUZ1E563KBN	0.056 25V [M]
R705	ERJ6GEYJ124A	120K 1/10W [M]	R816	ERDS2TJ102T	1K 1/4W [M]	C710	ECUV1H151KCN	150P 50V [M]
R706	ERJ6GEYJ102A	1K 1/10W [M]	R817	ERDS2TJ473T	47K 1/4W [M]	C711	ECUZ1E104ZFN	0.1 25V [M]
R707	ERJ6GEYJ474A	470K 1/10W [M]	R818	ERDS2TJ473T	47K 1/4W [M]	C712	ECUZ1E104ZFN	0.1 25V [M]
R708	ERJ6GEYJ154A	150K 1/10W [M]	R819	ERDS2TJ100T	10 1/4W [M]	C713	ECUZ1E104MBN	0.1 25V [M]
R709	ERJ6GEYJ473A	47K 1/10W [M]	R820	ERDS2TJ100T	10 1/4W [M]	C714	ECEA0JKA101I	100 6.3V [M]
R710	ERJ6GEYJ103A	10K 1/10W [M]	R851	ERDS2TJ222T	2.2K 1/4W [M]	C715	ECUZ1H182KBN	1800P 50V [M]
R711	ERJ6GEYJ154A	150K 1/10W [M]	R852	ERDS2TJ102T	1K 1/4W [M]	C716	ECUZ1H821KBN	820P 50V [M]
R712	ERJ6GEYJ221A	220 1/10W [M]				C717	ECUZ1E104ZFN	0.1 25V [M]
R715	ERJ6GEYJ122A	1.2K 1/10W [M]				C718	ECUZ1C224KBN	0.22 16V [M]
R717	ERJ6GEYJ102A	1K 1/10W [M]		CAPACITORS		C721	ECUZ1H150JCN	15P 50V [M]
R718	ERJ6GEYJ102A	1K 1/10W [M]				C722	ECUZ1H150JCN	15P 50V [M]
R719	ERJ6GEYJ102A	1K 1/10W [M]	C11	ECBT1E103ZF5	0.01 25V [M]	C723	ECEA1AKA221I	220 10V [M]
R720	ERJ6GEYJ102A	1K 1/10W [M]	C12	ECEA1CM332B	3300 16V [M] ⚠	C724	ECUZ1E104MBN	0.1 25V [M]
R721	ERJ6GEYJ101A	100 1/10W [M]	C15	ECBT1H102KB5	1000P 50V [M]	C725	ECUZ1H102KBN	1000P 50V [M]
R722	ERJ6GEYJ563A	56K 1/10W [M]	C16	ECA1AM471B	470P 10V [M]	C726	ECUZ1H102KBN	1000P 50V [M]
R723	ERJ6GEYJ182A	1.8K 1/10W [M]	C17	ECEA0JKA101B	100 6.3V [M]	C727	ECA1HAK010XI	1 50V [M]
R724	ERJ6GEYJ333A	33K 1/10W [M]	C20	ECBT1E103ZF5	0.01 25V [M] E,EB,EG,GN	C728	ECA1HAK010XI	1 50V [M]
R725	ERJ6GEYJ122A	1.2K 1/10W [M]	C20	ECBT1H102KB5	1000P 50V [M] GC	C730	ECUZ1E104ZFN	0.1 25V [M]
R726	ERJ6GEYJ473A	47K 1/10W [M]	C21	RCA1VM101BT	100P 35V [M]	C731	ECEA0JKA221I	220 6.3V [M]
R727	ERJ6GEYJ682A	6.8K 1/10W [M]	C22	RCA1VM101BT	100P 35V [M]	C732	ECEA0JKA221I	220 6.3V [M]
R728	ERJ6GEYJ682A	6.8K 1/10W [M]	C25	ECBT1H102KB5	1000P 50V [M]	C733	ECUZ1E104MBN	0.1 25V [M]
R729	ERJ6GEYJ562A	5.6K 1/10W [M]	C26	ECBT1H102KB5	1000P 50V [M]	C734	ECEA1AKA221I	220 10V [M]
R731	ERJ6GEYJ822A	8.2K 1/10W [M]	C30	ECBT1E103ZF5	0.01 25V [M] GC GN	C735	ECUZ1E104ZFN	0.1 25V [M]
R734	ERJ6GEYJ101A	100 1/10W [M]	C31	ECEA1JM470B	47 63V [M]	C736	ECUZ1E104ZFN	0.1 25V [M]
R735	ERJ6GEYJ101A	100 1/10W [M]	C32	ECEA1JM470B	47 63V [M]	C737	ECUZ1E104ZFN	0.1 25V [M]
R736	ERJ6GEYJ101A	100 1/10W [M]	C33	ECBT1H102KB5	1000P 50V [M]	C738	ECUZ1E104MBN	0.1 25V [M]
R738	ERJ6GEYJ223A	22K 1/10W [M]	C34	ECBT1H102KB5	1000P 50V [M] GC	C739	ECUZ1H102KBN	1000P 50V [M]
R741	ERJ6GEYJ562A	5.6K 1/10W [M]	C41	ECBT1H102KB5	1000P 50V [M]	C742	ECUZ1E273KBN	0.027 25V [M]
R742	ERJ6GEYJ562A	5.6K 1/10W [M]	C42	ECEA0JKA101B	100 6.3V [M]	C743	ECUZ1E104ZFN	0.1 25V [M]
R743	ERJ6GEYJ562A	5.6K 1/10W [M]	C301	ECBT1C103NS5	0.01 16V [M]	C744	ECUZ1E123KBN	0.012 25V [M]
R744	ERJ6GEYJ104A	100K 1/10W [M]	C401	ECBT1C103NS5	0.01 16V [M]	C745	ECUZ1C473KBN	0.047 16V [M]
R745	ERJ6GEYJ155A	1.5M 1/10W [M]	C402	ECA0JM471B	470 6.3V [M]	C747	ECUV1H221KBN	220P 50V [M]
R748	ERJ6GEYJ182A	1.8K 1/10W [M]	C403	ECEA1HKA010B	1 50V [M]	C749	ECUZ1H222KBN	2200P 50V [M]
R749	ERJ6GEYJ682A	6.8K 1/10W [M]	C404	ECEA1EKA4R7B	4.7 25V [M]	C750	ECUZ1E104MBN	0.1 25V [M]
R752	ERJ8GEYJ220A	22 1/8W [M]	C405	ECBT1C103NS5	0.01 16V [M]	C751	ECUZ1E104MBN	0.1 25V [M]
R803	ERDS2TJ224T	220K 1/4W [M]	C406	ECEA1HKA010B	1 50V [M]	C753	ECUZ1H471KBM	470P 50V [M]
R804	ERDS2TJ224T	220K 1/4W [M]	C421	ECBT1C103NS5	0.01 16V [M]	C754	ECUZ1H471KBN	470P 50V [M]
R805	ERDS2TJ822T	8.2K 1/4W [M]	C461	ECEA1AU470B	47 10V [M]	C761	ECUZ1H471KBN	470P 50V [M]
R806	ERDS2TJ822T	8.2K 1/4W [M]	C462	ECBT1C103NS5	0.01 16V [M]	C762	ECUZ1H471KBN	470P 50V [M]
R807	ERDS2TJ123T	12K 1/4W [M]	C601	ECFR1E104ZF5	0.1 25V [M]	C801	ECEA1AKA470B	47 10V [M]

Ref No.	Part No.	Values & Remarks	Ref No.	Part No.	Values & Remarks	Ref No.	Part No.	Values & Remarks
C802	ECEA1AKA470B	47 10V [M]		CHIP JUMPERS		RJ723	ERJ6GEY0R00A	0 1/10W [M]
C805	ECCR1H391J5	390P 50V [M]				RJ724	ERJ6GEY0R00A	0 1/10W [M]
C806	ECCR1H391J5	390P 50V [M]	RJ701	ERJ6GEY0R00A	0 1/10W [M]	RJ725	ERJ6GEY0R00A	0 1/10W [M]
C807	ECCR1H391J5	390P 50V [M]	RJ702	ERJ8GEY0R00A	0 1/8W [M]	RJ726	ERJ6GEY0R00A	0 1/10W [M]
C808	ECCR1H391J5	390P 50V [M]	RJ703	ERJ8GEY0R00A	0 1/8W [M]	RJ727	ERJ6GEY0R00A	0 1/10W [M]
C809	ECEA0JKA470B	47 6.3V [M]	RJ704	ERJ8GEY0R00A	0 1/8W [M]	RJ728	ERJ6GEY0R00A	0 1/10W [M]
C810	ECEA0JKA470B	47 6.3V [M]	RJ705	ERJ8GEY0R00A	0 1/8W [M]	RJ750	ERJ6GEY0R00A	0 1/10W [M]
C811	ECBT1H102KB5	1000P 50V [M]	RJ706	ERJ8GEY0R00A	0 1/8W [M]			
C812	ECBT1H102KB5	1000P 50V [M]	RJ707	ERJ8GEY0R00A	0 1/8W [M]		TEST JUMPER	
			RJ708	ERJ8GEY0R00A	0 1/8W [M]			
			RJ709	ERJ8GEY0R00A	0 1/8W [M]	TJ701	EYF8CU	TEST JUMPER [M]
			RJ710	ERJ8GEY0R00A	0 1/8W [M]			
			RJ721	ERJ6GEY0R00A	0 1/10W [M]			
			RJ722	ERJ6GEY0R00A	0 1/10W [M]			

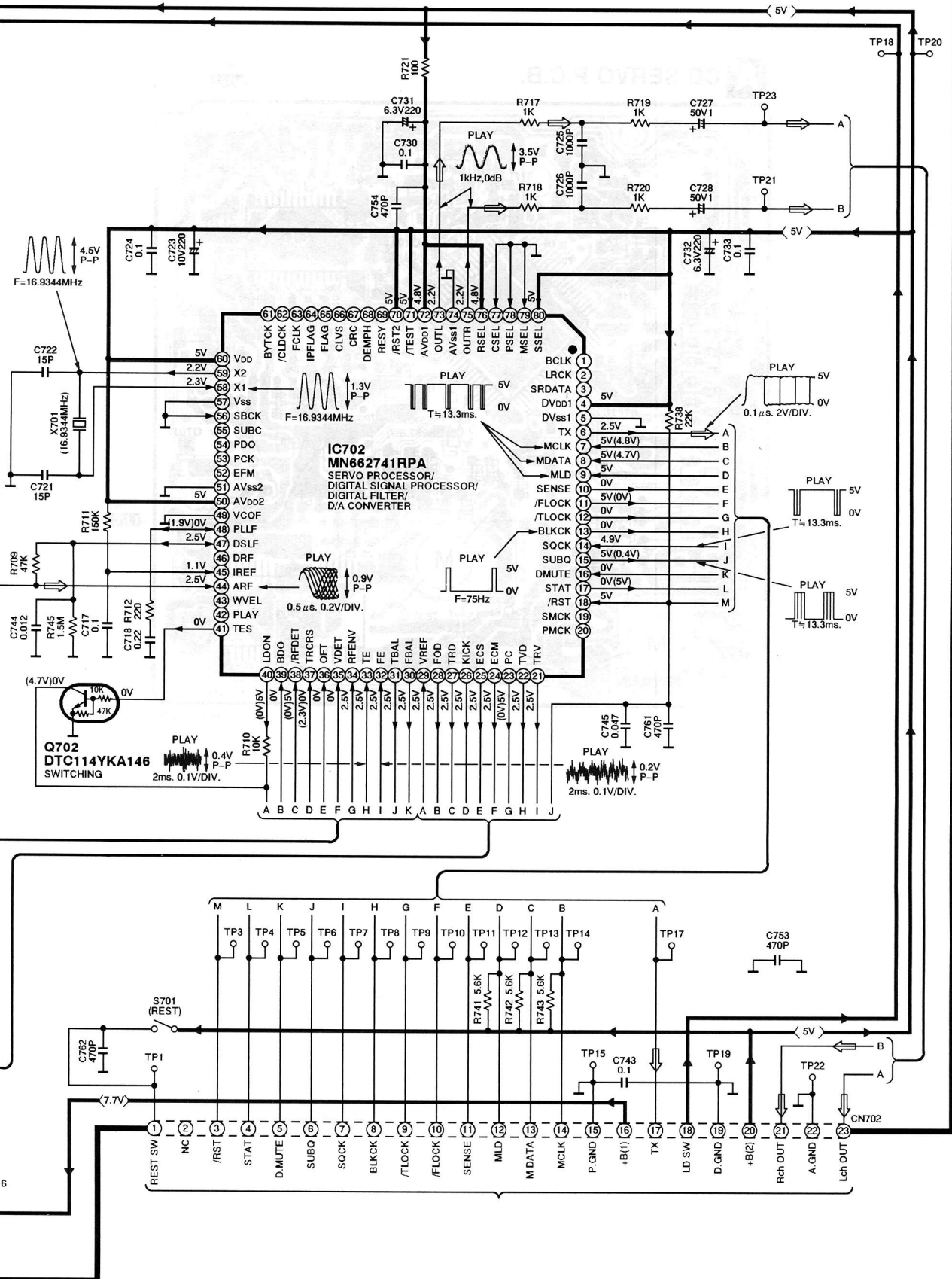
Schematic Diagram (New CD Unit)

A CD SERVO CIRCUIT

OPTICAL PICKUP CIRCUIT

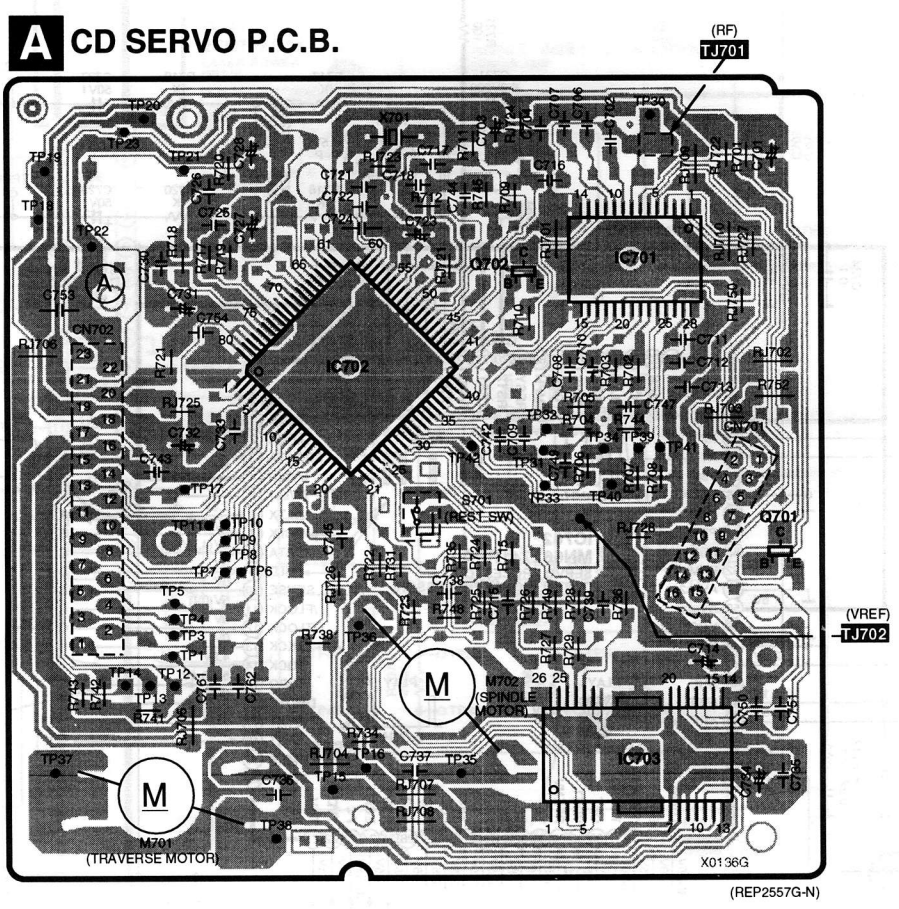


Note: ● → : CD signal line ● → : Positive voltage lines

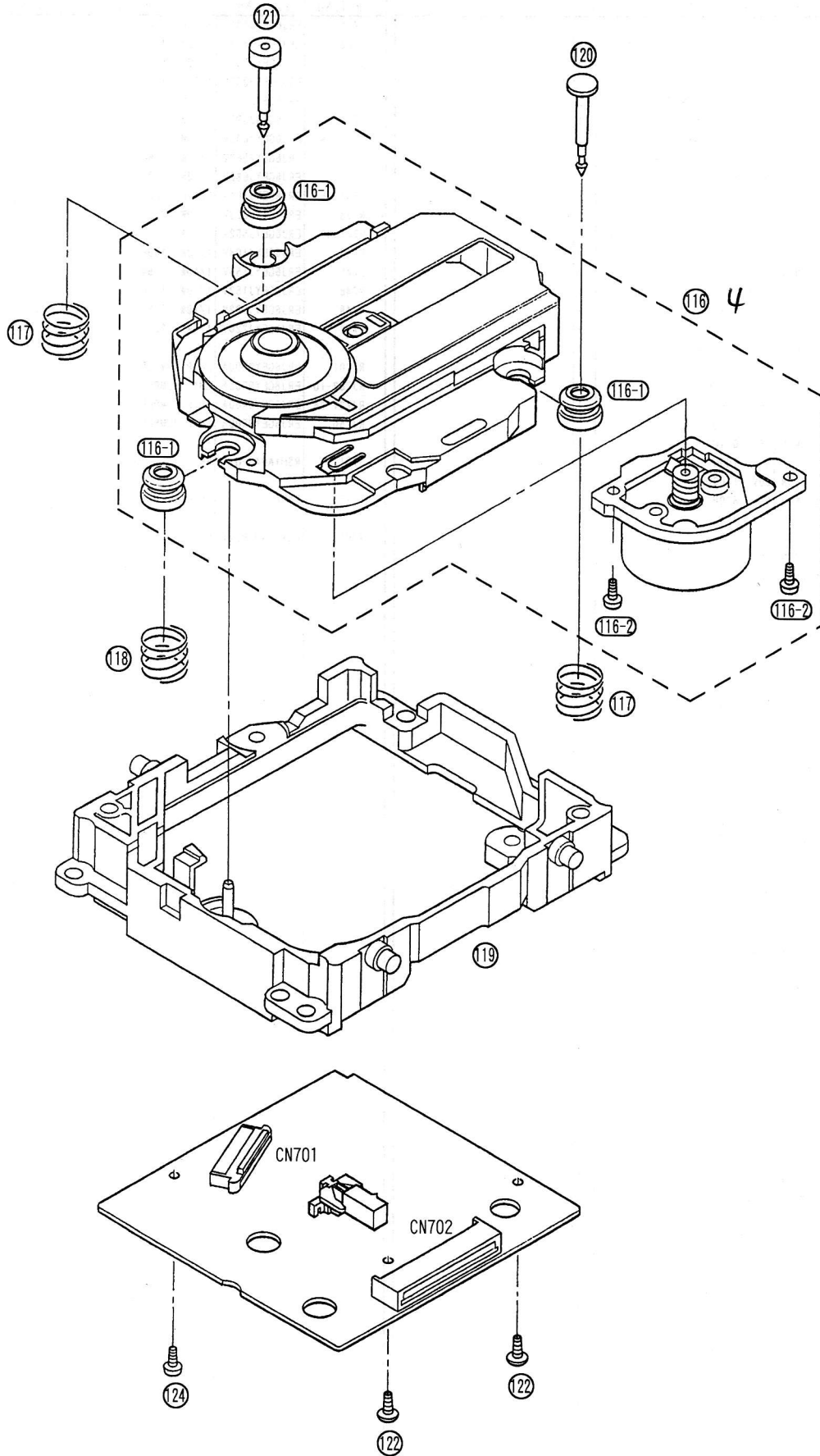


Printed Circuit Board Diagram (New CD Unit)

Note: This printed circuit board diagram may be modified at any time with the development of new technology.



■ CD Unit Parts Location (New CD Unit)



Replacement Parts List (New CD Unit)

Ref.No.	Part No.	Part Name & Description	Pcs	Remarks	Ref.No.	Part No.	Part Name & Description	Pcs	Remarks
△ 116	RAE0152Z	TRAVERSE DECK ASS'Y	1		R721	ERJ6GEYJ101V	1/10W 100	1	
116-1	SHGD113-1	FLOATING RUBBER	3		R722	ERJ6GEYJ473V	1/10W 47K	1	
116-2	SNSD38	SCREW	2		R723	ERJ6GEYJ152V	1/10W 1.5K	1	
117	RME0109	FLOATING SPRING(1)	2		R724	ERJ6GEYJ333V	1/10W 33K	1	
118	RME0142	FLOATING SPRING(2)	1		R725	ERJ6GEYJ122V	1/10W 1.2K	1	
119	RMRO698-K	TRAVERSE CHASSIS	1		R726	ERJ6GEYJ393V	1/10W 39K	1	
120	RMS0627	TRAVERSE FIXED PIN(1)	1		R727, 28	ERJ6GEYJ682V	1/10W 6.8K	2	
121	RMS0350-1	TRAVERSE FIXED PIN(2)	1		R729	ERJ6GEYJ562V	1/10W 5.6K	1	
122	XTV2+6G	SCREW	2		R731	ERJ6GEYJ682V	1/10W 6.8K	1	
124	XTN2+6G	SCREW	1		R734-36	ERJ6GEYJ101V	1/10W 100	3	
					R738	ERJ6GEYJ223V	1/10W 22K	1	
C701	ECEA0JKA3301	6.3V 33U	1		R741-43	ERJ6GEYJ562V	1/10W 5.6K	3	
C702	ECUZNE104MBN	25V 0.1U	1		R744	ERJ6GEYJ104V	1/10W 100K	1	
C703	ECEA0JKA1011	6.3V 100U	1		R745	ERJ6GEYJ155V	1/10W 1.5M	1	
C704	ECUZNE104MBN	25V 0.1U	1		R748	ERJ6GEYJ152V	1/10W 1.5K	1	
C706	ECUV1H272KBN	50V 2700P	1		R749	ERJ6GEYJ682V	1/10W 6.8K	1	
C707	ECUV1E273KBN	25V 0.027U	1		R752	ERJ6GEYJ220V	1/8W 22	1	
C708	ECUV1H392KBN	50V 3900P	1						
C709	ECUV1E563KBN	25V 0.056U	1		RJ701	ERJ6GEYOR00A	CHIP JUMPER	1	
C710	ECUV1H151KCN	50V 150P	1		RJ702-10	ERJ8GEYOR00A	CHIP JUMPER	9	
C711, 12	ECUWNE104ZFN	25V 0.1U	2		RJ721-28	ERJ6GEYOR00A	CHIP JUMPER	8	
C713	ECUZNE104MBN	25V 0.1U	1		RJ750	ERJ6GEYOR00A	CHIP JUMPER	1	
C714	ECEA0JKA1011	6.3V 100U	1						
C715	ECUV1H182KBN	50V 1800P	1		S701	RSH1A043-U	SW	1	
C716	ECUV1H821KBN	50V 820P	1						
C717	ECUWNE104ZFN	25V 0.1U	1		TJ701	EYF8CU	CHIP CLIP	1	
C718	ECUVNC224KBN	16V 0.22U	1						
C721, 22	ECUV1H150JCN	50V 15P	2		X701	RSX216M9M01T	OSCILLATOR	1	
C723	ECEA1AKA2211	10V 220U	1						
C724	ECUZNE104MBN	25V 0.1U	1						
C725, 26	ECUE1H102KBN	50V 1000P	2						
C727, 28	ECEA1HPK0101	50V 1U	2						
C730	ECUWNE104ZFN	25V 0.1U	1						
C731, 32	ECEA0JKA2211	6.3V 220U	2						
C733	ECUZNE104MBN	25V 0.1U	1						
C734	ECEA1AKA2211	10V 220U	1						
C735-37	ECUWNE104ZFN	25V 0.1U	3						
C738	ECUZNE104MBN	25V 0.1U	1						
C739	ECUV1H103KBN	50V 0.01U	1						
C742	ECUV1E273KBN	25V 0.027U	1						
C743	ECUWNE104ZFN	25V 0.1U	1						
C744	ECUV1E123KBN	25V 0.012U	1						
C745	ECUE1C473KBN	16V 0.047U	1						
C747	ECUV1H221KBN	50V 220P	1						
C749	ECUV1H222KBN	50V 2200P	1						
C750, 51	ECUZNE104MBN	25V 0.1U	2						
C753	ECUV1H471KBN	50V 470P	1						
C754	ECUE1H471KBN	50V 470P	1						
C761, 62	ECUE1H471KBN	50V 470P	2						
CN701	RJU035T016-1	SOCKET (16P)	1						
CN702	RJS1A6723-1Q	CONNECTOR (23P)	1						
IC701	AN8837SBE1	IC	1						
IC702	MN662741RPA	IC	1						
IC703	AN8780SBE2	IC	1						
Q701	2SB709STX	TRANSISTOR	1						
Q702	DTC114YKA146	TRANSISTOR	1						
R701	ERJ6GEYJ4R7V	1/10W 4.7	1						
R702	ERJ6GEYJ822V	1/10W 8.2K	1						
R703	ERJ6GEYJ823V	1/10W 82K	1						
R704	ERJ6GEYJ102A	1/10W 1K	1						
R705	ERJ6GEYJ124V	1/10W 120K	1						
R706	ERJ6GEYJ102A	1/10W 1K	1						
R707	ERJ6GEYJ474V	1/10W 470K	1						
R708	ERJ6GEYJ154V	1/10W 150K	1						
R709	ERJ6GEYJ473V	1/10W 47K	1						
R710	ERJ6GEYJ103V	1/10W 10K	1						
R711	ERJ6GEYJ154V	1/10W 150K	1						
R712	ERJ6GEYJ221V	1/10W 220	1						
R715	ERJ6GEYJ122V	1/10W 1.2K	1						
R717-20	ERJ6GEYJ102A	1/10W 1K	4						