

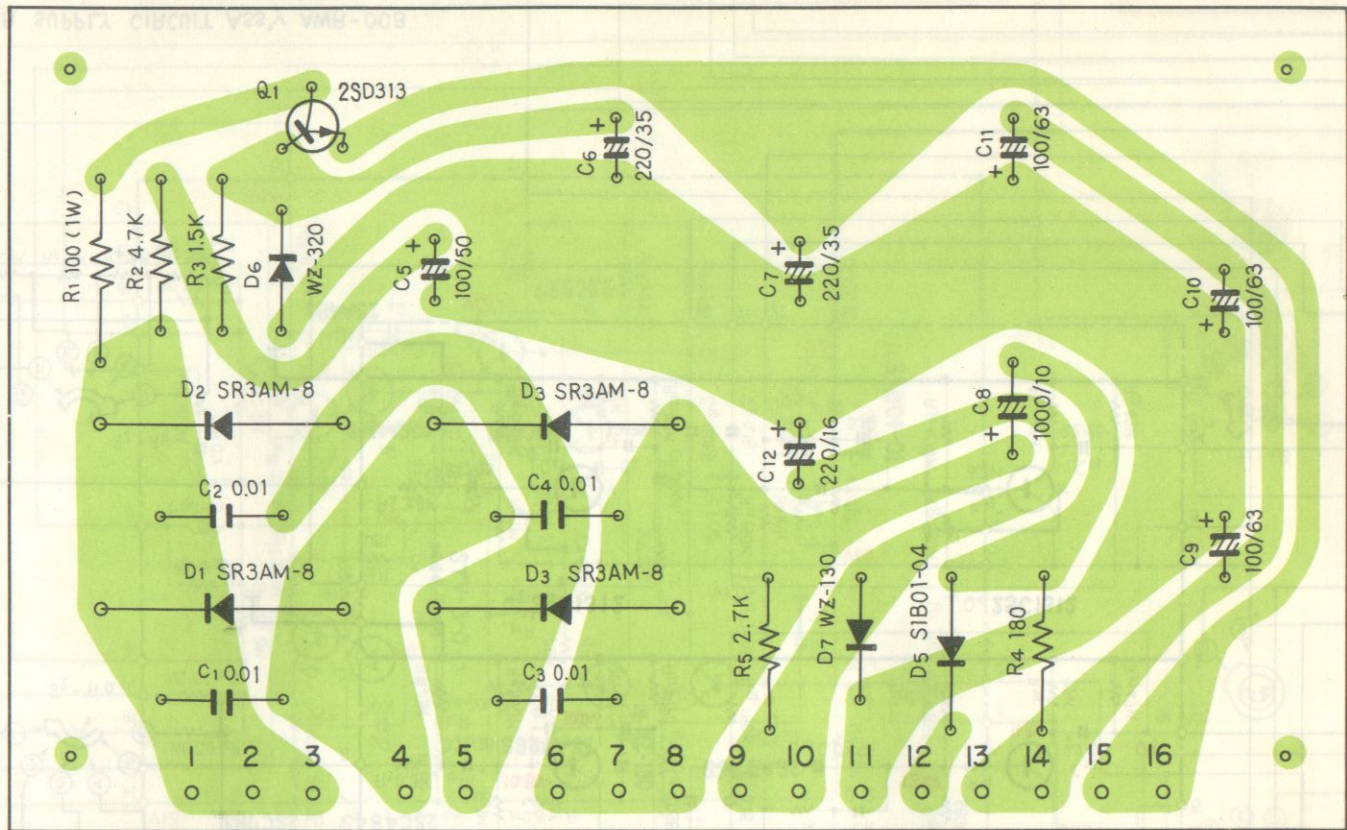
STEREO POWER AMPLIFIER

SM-3000

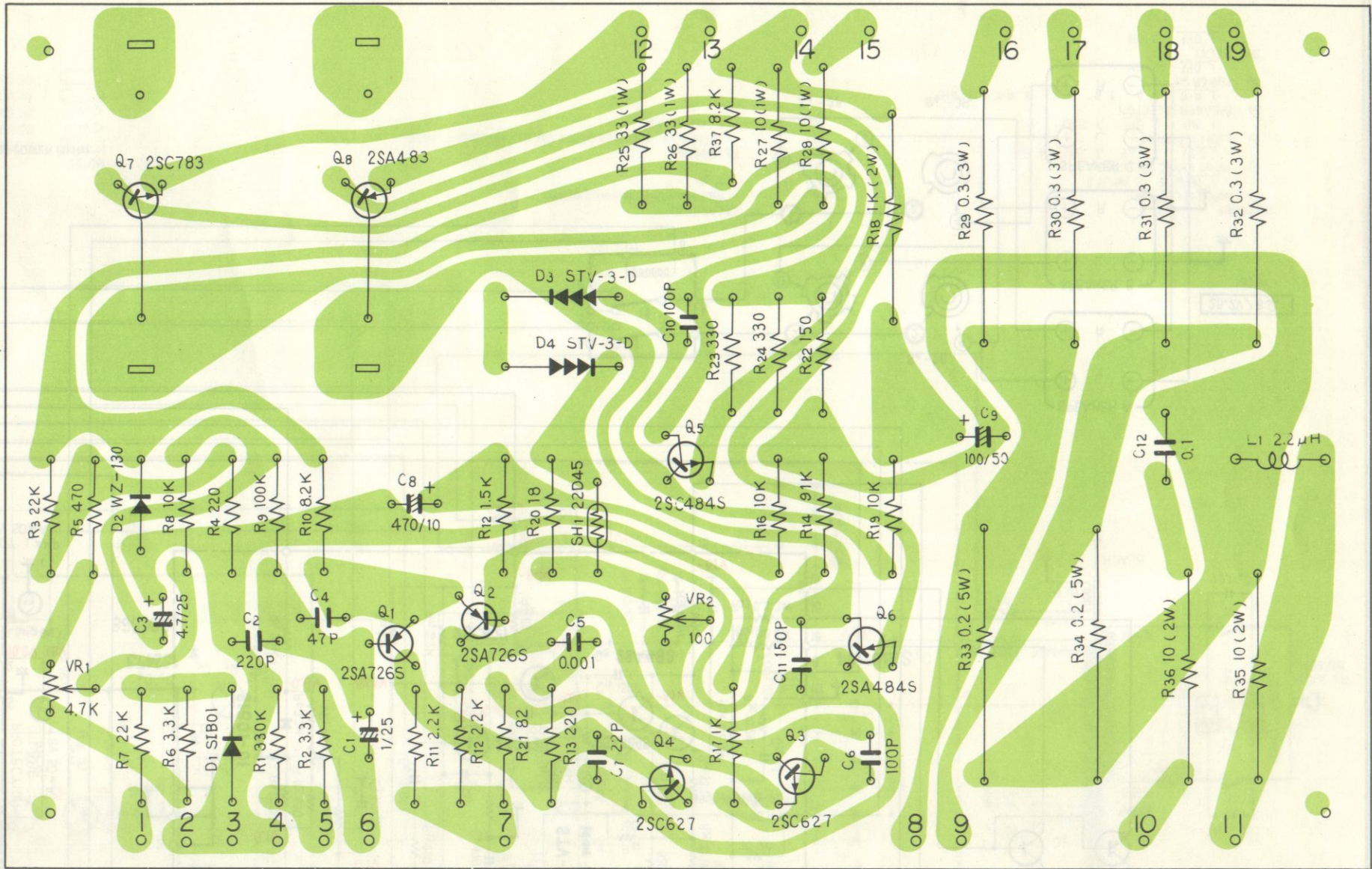
NVW NW

7

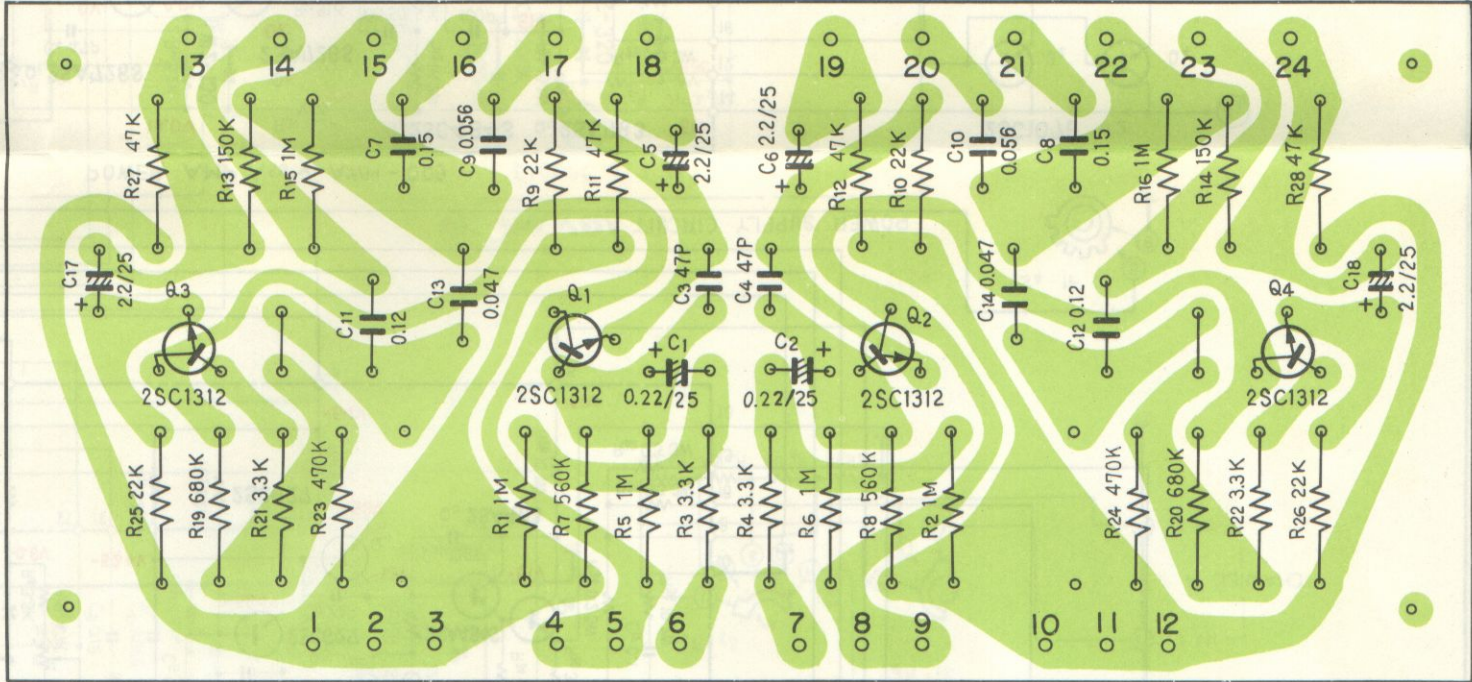
Power supply ass'y AWR-008



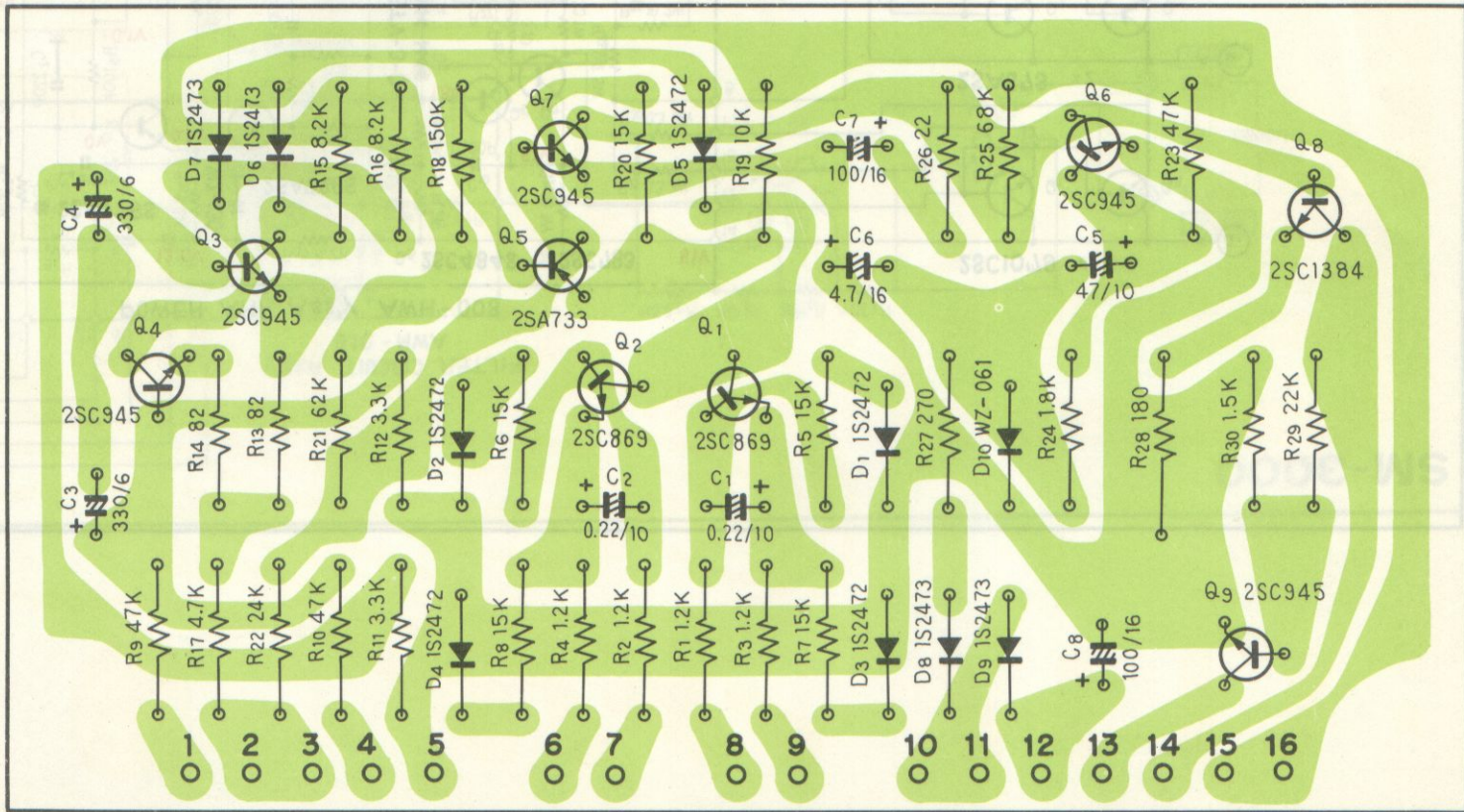
Power amp ass'y AWH-008



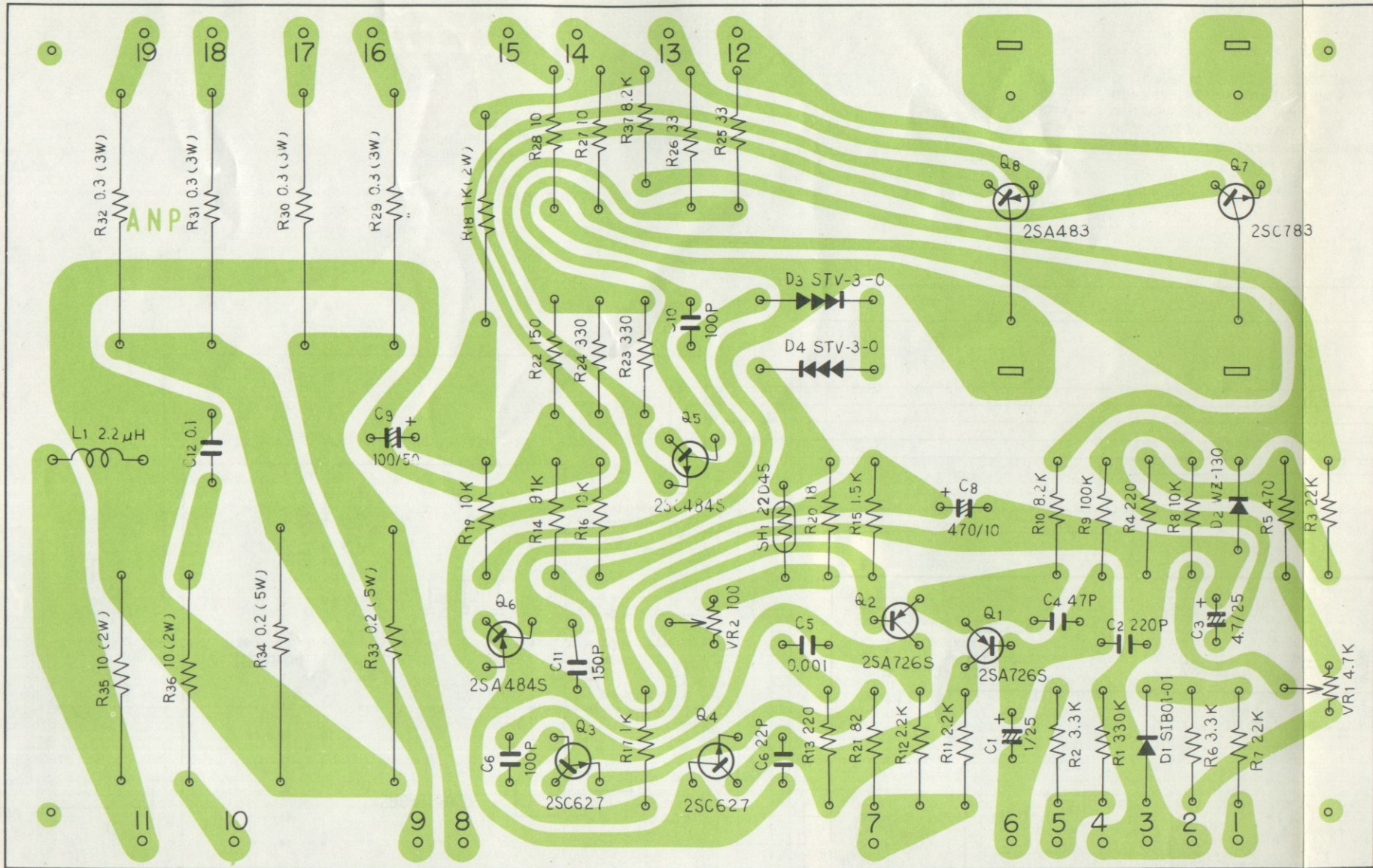
Filter amp ass'y AWM-015

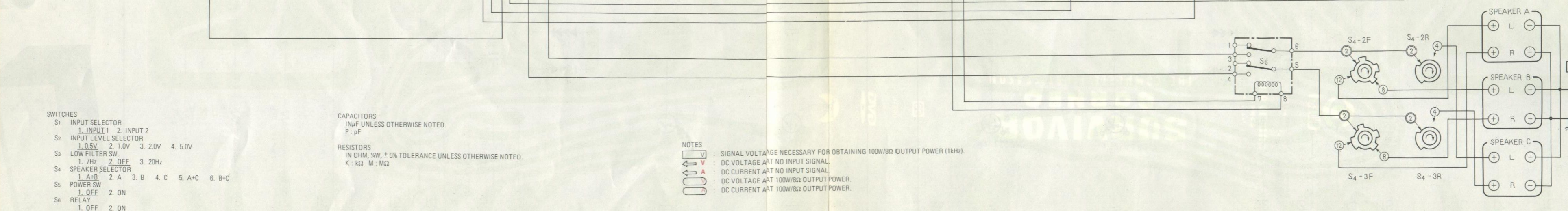
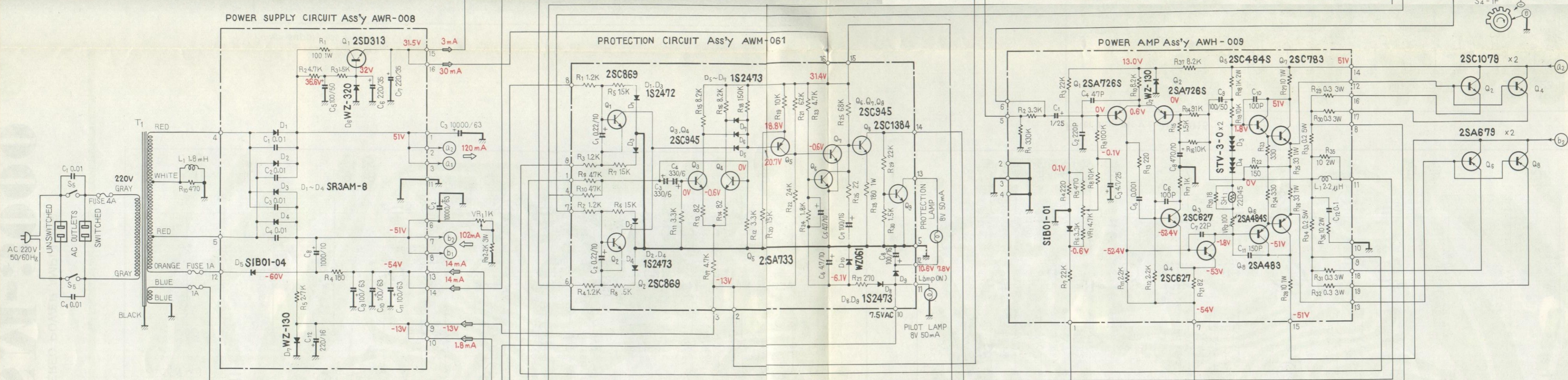
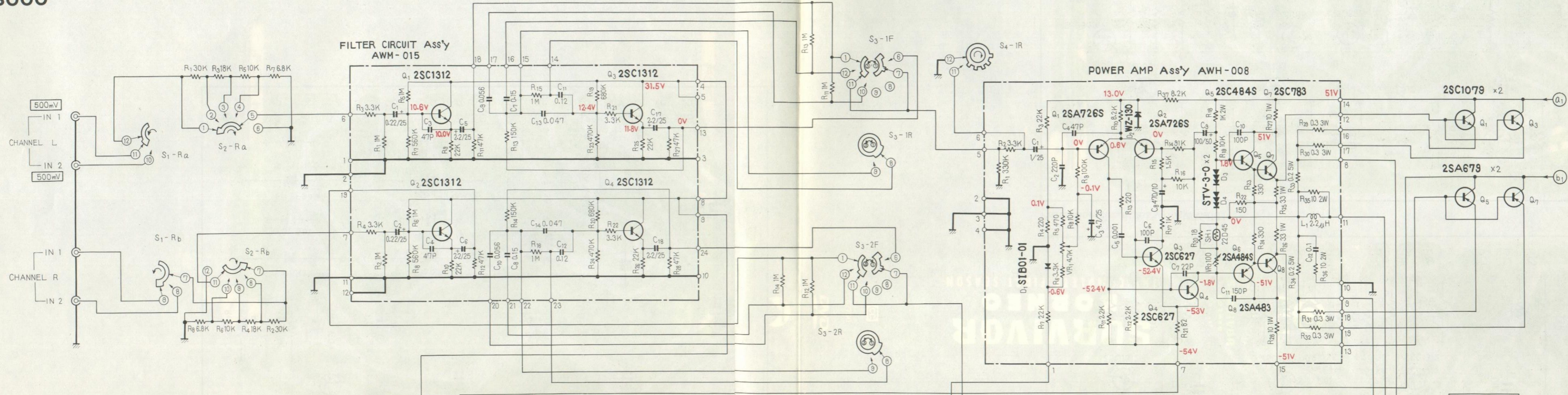


Protection circuit ass'y AWM-061



- 1 O
- 2 O
- 3 O
- 4 O
- 5 O
- 6 O
- 7 O
- 8 O
- 9 O
- 10 O
- 11 O
- 12 O
- 13 O
- 14 O
- 15 O
- 16 O





- SWITCHES**
- S1 INPUT SELECTOR
1. INPUT 1 2. INPUT 2
 - S2 INPUT LEVEL SELECTOR
1. 0.5V 2. 1.0V 3. 2.0V 4. 5.0V
 - S3 LOW FILTER SW.
1. 7Hz 2. OFF 3. 20Hz
 - S4 SPEAKER SELECTOR
1. A+B 2. A 3. B 4. C 5. A+C 6. B+C
 - S5 POWER SW.
1. OFF 2. ON
 - S6 RELAY
1. OFF 2. ON

- CAPACITORS**
IN μ F UNLESS OTHERWISE NOTED.
P. - pF
- RESISTORS**
IN OHM, $\frac{1}{4}$ W, $\pm 5\%$ TOLERANCE UNLESS OTHERWISE NOTED.
K. - k Ω M. - M Ω

- NOTES**
- : SIGNAL VOLTAGE NECESSARY FOR OBTAINING 100W/8 Ω OUTPUT POWER (1kHz).
 - : DC VOLTAGE AAT NO INPUT SIGNAL.
 - : DC CURRENT AAT NO INPUT SIGNAL.
 - : DC VOLTAGE AAT 100W/8 Ω OUTPUT POWER.
 - : DC CURRENT AAT 100W/8 Ω OUTPUT POWER.