

INTERNATIONAL GUARANTEE

Bang & Olufsen SOLE DISTRIBUTORS

AUSTRALIA
G.R.D. Group Pty. Ltd.
698 Burke Road
Camberwell
Victoria 3124

Phone: (03) 82-1256

AUSTRIA
A. Weiner Ges.m.b.H.
Serviceabteilung
1140 Wien
Cumberlandstrasse 16

Phone: (0222) 827491

BELGIUM
S.A. Bang & Olufsen N.V.
523 Avenue Louise
1050 Bruxelles

Phone: (02) 6484858

CANADA
Musimart of Canada Limited
970 McEachran Ave.
Montreal 154. P.Q.
H2V 3E3

Phone: 514/273-8354

DENMARK
Bang & Olufsen a/s
7600 Struer

Phone: 07/851122

FINLAND
OY Bang & Olufsen AB
Kuortanegatan 1
SF - 00510 Helsingfors 51

Phone: 716400

FRANCE
Ets. VIBRASSON
97-99 Rue Damrémont
75018 Paris

Phone: 01/255.42.01

GERMANY
Beo Hifi-Geräte
Vertriebsges.m.b.H. & Co.
2000 Hamburg 1
Wandalenweg 20

Phone: 040/2874230

GREECE
John Ul. Kyriacopoulos & Co.
Amerikis &
17 Valaoritou Streets
Athens 134

Phone: 3627697 - 3606543

HOLLAND
Bang & Olufsen
Nederland B.V.i.o.
P.O. Box 36
'S-Graveland

Phone: 035-61824

HONG KONG
The Radio People Ltd.
25, Chatham Road
Kowloon

Phone: 663241-2

IRAN
Golavaz Co. Ltd.
Saman Center
Elizabeth Blvd.
Tehran 14

Phone 623088-655218

IRELAND
Bang & Olufsen
United Kingdom Limited
Gloucester GL4 7DE

Phone: 0452/21591

ISRAEL
Royal Electronics Limited
48 Hanamal Street
Haifa

Phone: 624224

ITALY
Audio Italiana s.r.l.
Via Pinerolo 2,
00182 Rom

Phone: 06 - 754358

LUXEMBOURG
S.A. Bang & Olufsen N.V.
523 Avenue Louise
1050 Bruxelles

Phone: (02) 6484858

NORWAY
Bang & Olufsen A/S
Bragerhagen 35
3000 Drammen

Phone: (02) 833180

SINGAPORE
Eastland Trading Company
P.O. Box 1128
Singapore 7

Phone: 21021

SOUTH AFRICA
Teltron (Pty) Ltd.
17 Faraday Street
Village Main
P.O. Box 264
Johannesburg

Phone: 21-5664

SWEDEN
Bang & Olufsen Svenska AB
Grevgatan 58
11458 Stockholm

Phone: 08/631260

SWITZERLAND
Bang & Olufsen
Kanalstrasse 27
8152 Glattbrugg

Phone: (01) 8100266

UNITED KINGDOM
Bang & Olufsen
United Kingdom Limited
Eastbrook Road
Gloucester GL4 7DE

Phone: 0452/21591

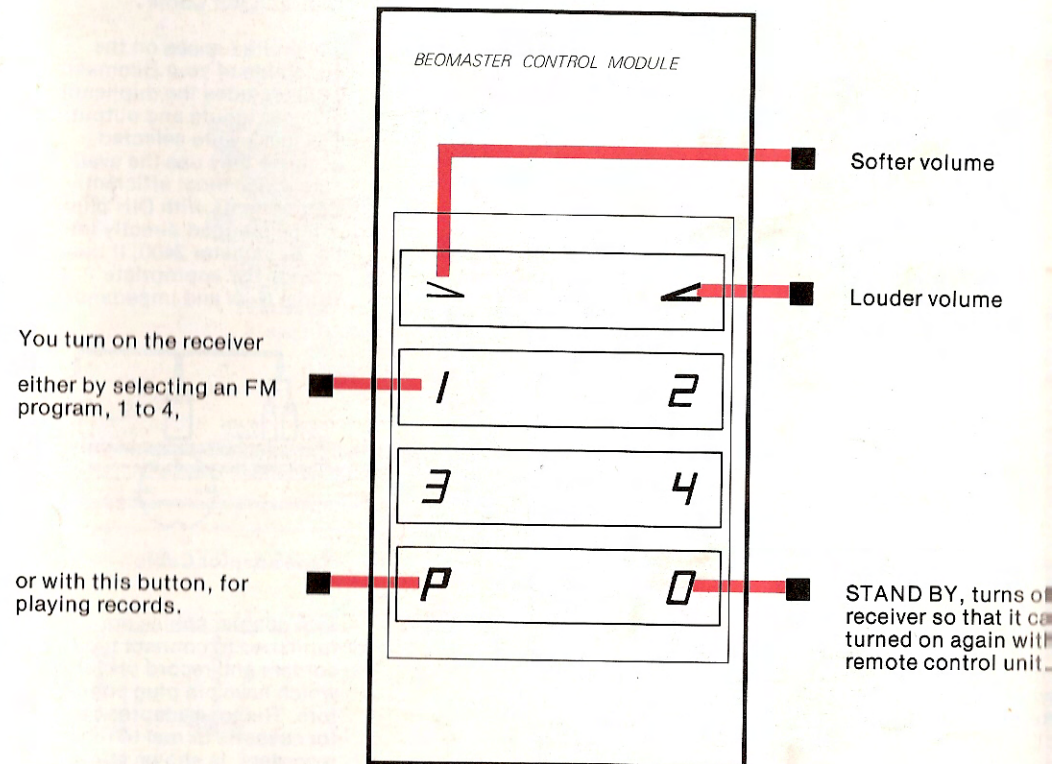
USA
Bang & Olufsen of America
Inc
515 Busse Road
Elk Grove Village
Ill 60007

Phone: (312) 640 - 0660

If you want information about
other addresses than the
ones listed here you are wel-
come to write to

Bang & Olufsen a/s
International Consumer
Division
Bomark
7600 Struer
Denmark

THIS IS HOW YOU OPERATE YOUR BEOMASTER 2400



PREADJUSTMENT OF FUNCTIONS

Power switch. Should normally be at ON. In daily use, turn off by touching STAND BY. If you are going to leave the receiver for some length of time, you should set the power switch to OFF.

BASS and TREBLE. To accentuate these tone ranges, slide the controls towards . To attenuate them, slide the controls toward .

Balance between left and right channels. Sliding the control towards attenuates the left side. Sliding it towards attenuates the right channel.

PRESET VOL. Determines the receiver's volume level when you turn it on. MEDIUM is the normal setting; High and LOW are higher and lower volume levels, respectively. Note that the receiver does not respond if you alter the settings while the receiver is on. The new settings will be operative only after the receiver has been turned off and turned on again after 5 - 10 seconds.

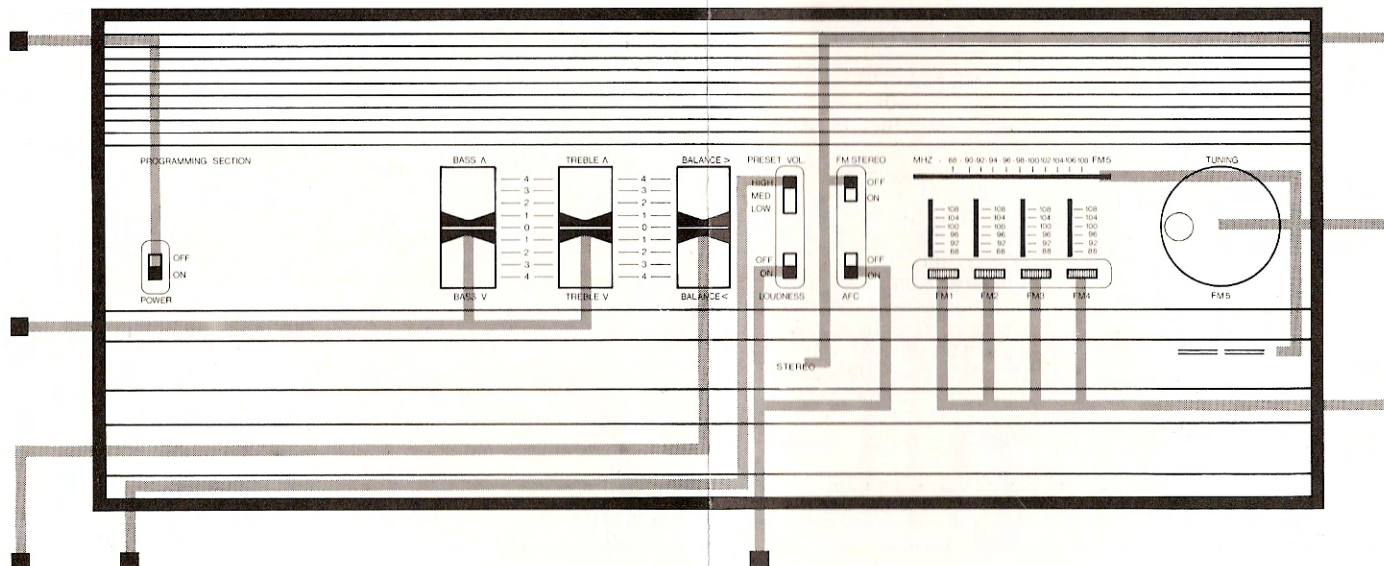
LOUDNESS ON, boosts low and high frequencies at low volume levels. OFF, linear reproduction.

AFC, ON, automatic frequency control operative. OFF, inoperative.

FM STEREO. ON, stereo reproduction of FM stereo programs, indicated by the FM STEREO indicator being on. OFF, mono reproduction of FM program.

FM5, continuous tuning 88 - 108 MHz, large TUNING knob and indicator light. The station of your choice is tuned in correctly when the two lights show equal brightness.

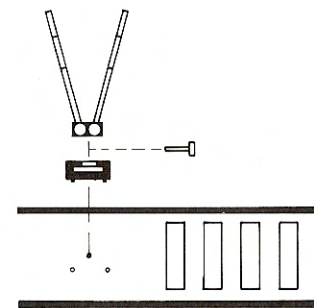
FM 1 to FM 4, pretuning of FM programs. Turn on FM 1, set AFC OFF and with the FM 1 knob tune the station you want to be programmed until the two sides of the TUNING indicator show equal brightness. Similarly tune FM 2 to FM 5 to other FM programs and set AFC ON.



Setting UP

Your Beomaster 2400 is intended for horizontal placement on table or wall-shelf system.

In order to allow heat to drain away from the receiver, the ventilating apertures on the top side must be accessible for air circulation. Avoid placing the receiver directly above a heat radiator, where the temperature is considerably higher than in the rest of the room.



FM antenna

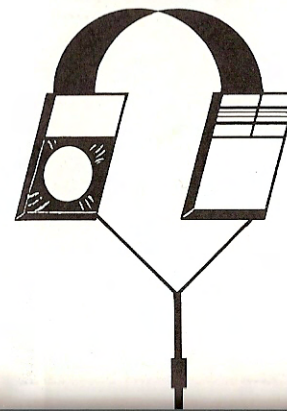
A telescoping, "rabbit ears"

OFF

Speaker pair No. 2 can be disconnected with the OFF SPEAKERS 2 switch.

Ambiophonic stereo

You can enjoy the pleasure of ambiophonic stereo with the addition of an ambio-box and a second pair of speakers. Ask your dealer for a demonstration.



INTERNATIONAL GUARANTEE

In other countries in which Bang & Olufsen products are officially marketed any authorized Bang & Olufsen dealer will repair any defect or malfunction in the product free of charge providing that:

The product is "in warranty" under the terms of duration stated in the Limited Warranty. The defect or malfunction was not caused by damage while in possession of the consumer due to incorrect installation, maladjustment, misuse,

If you leave the US to reside in another country, Bang & Olufsen of America, Inc. will provide you with a "Verification of purchase" document which will confirm to Bang & Olufsen branch offices and/or sales agents the date you purchased your Bang & Olufsen product in the US.

If you wish to receive a "Verification of purchase" please address:

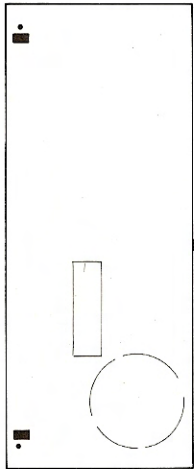
International Guarantee



Sloping placement

The indicator lights are best seen if the receiver is not placed too high above the floor.

If you place the receiver higher than 1.25 - 1.50 meters, it will be advantageous to slope the receiver by means of the supporting leg and two supporting feet which are supplied.



Insert the supporting leg in the back of the set, in one of the ventilating holes in the middle.

The two supporting feet should be pushed up into the bottom plate near the fixed feet, with the semicircular cutouts facing forwards.

Power connection

The Beomaster 2400 is designed for operation on 117 volts AC. It will operate on voltages between 110 and 130 volts.

connected. This fits the socket on the rear of the receiver and plugs into the 300 ohm antenna input.

This antenna will deliver a good signal to the tuner in all but the most difficult or distant reception areas. In such cases an outdoor antenna is required. A plug is furnished with the receiver to connect this type of antenna. Your Beomaster 2400 also has a 60 - 75 ohm input for connection to a community antenna.

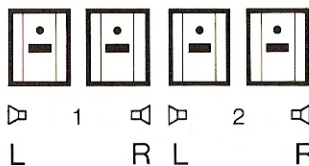
What Type Speaker?

Your Beomaster 2400 can deliver 30 watts of r.m.s. power per channel when stereo is played in one room. The speakers connected to it should therefore have a rating of not less than 30 watts continuous load, and their impedance should be 4 ohms. Use the

30 WATTS
4 OHMS

VOLUME controls with discretion. The power output rating is a minimum value, and in practice it is perfectly possible for some sound passages to contain much higher power if you advance the controls too far.

A total of four speakers may be connected to your Beomaster 2400. Pair No. 1 for stereo reproduction in one room; pair No. 2 in another room.



Left and right speakers plug into the sockets in the bottom of the receiver as shown above.

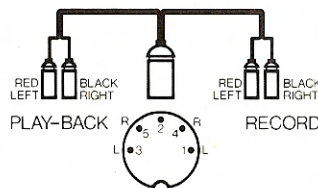
Record Player

Your Beomaster 2400 is intended for use with a low-impedance stereo pickup. The record-player cable should be plugged into the socket carrying this symbol.



Tape adaptor Cable

The limited space on the underside of your Beomaster 2400 precludes the duplication of audio inputs and outputs. DIN jacks were selected because they use the available space most efficiently. Components with DIN plugs can be plugged directly into the Beomaster 2400, if they provide the appropriate signal level and impedance.



Tape adaptor Cable

Two adapter cables are furnished to connect tape recorders and record players which have pin plug connectors. The tape adaptor cable, for cassette or reel to reel recorders, is shown above. The phono adaptor cable is shown below. In addition, the ground lead from your turntable must be attached to the ground lug located to the rear and between the Speaker 1 and Speaker 2 DIN jacks, on the underside of the Beomaster.



PHONO adaptor Cable

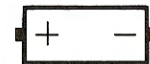
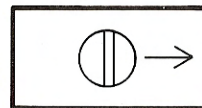
Headphones

A pair of stereo headphones may be plugged into the socket on the front edge of the receiver. Inserting the plug will automatically disconnect speaker pair No. 1.

Remote control unit

The portable unit is an ultrasound transmitter which will send signals to a microphone in the receiver proper as long as you keep one of the buttons depressed.

Avoid holding the transmitter aperture close to the ear; the non-audible sound pressure is strong enough to have a harmful effect on the auditory organs.



The remote control unit is supplied with a type 8700006 battery (mercury cell) which has especially long life. The same type should be used for replacement; your Bang & Olufsen dealer can supply it. As an alternative a conventional battery, IEC 10F 15, may be used.

Maintenance

The external surfaces of your Beomaster 2400 can normally be kept clean with a dry cloth.

Avoid using alcohol as this may damage the moulded parts.

Teak and rosewood surfaces that seem grey and dry may be given a thin application of teak or rosewood oil though not more than once or twice a year.

For the other surfaces we recommend a quality window cleaner.

consumer, or by a failure on the part of the consumer to provide reasonable and necessary maintenance

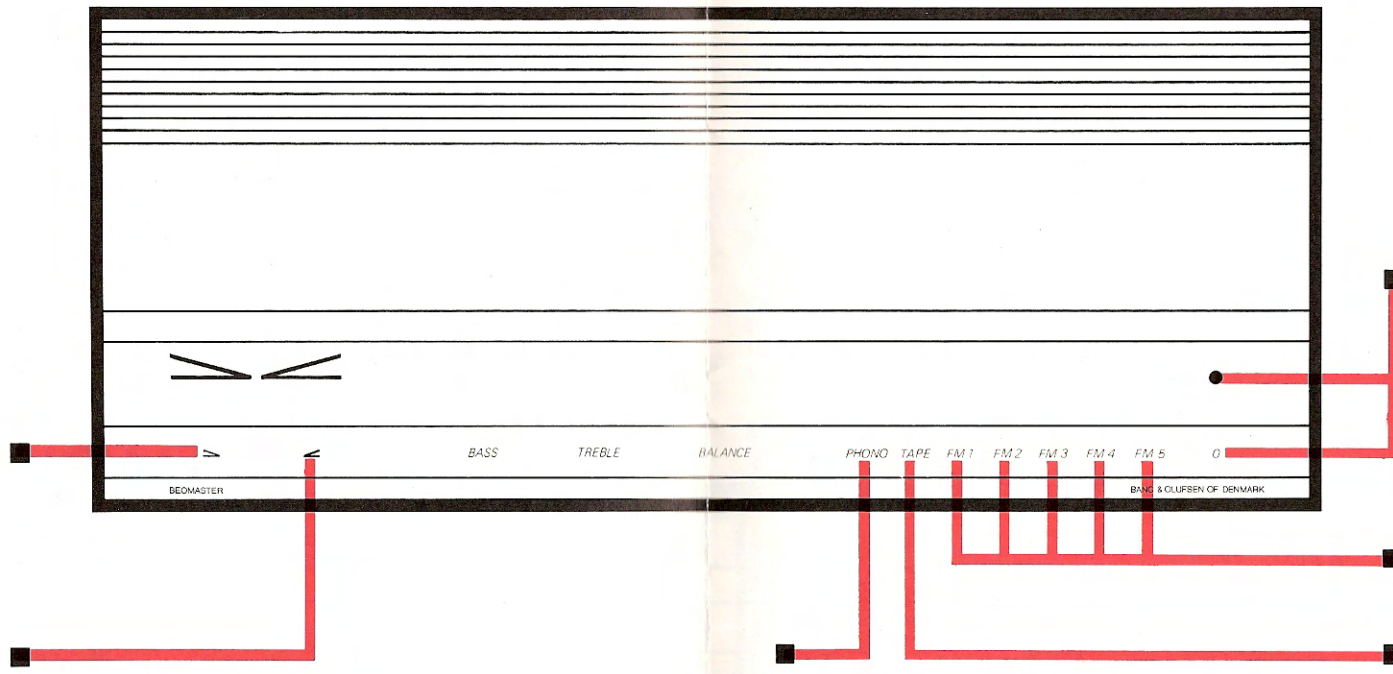
In order to obtain "in warranty" service outside the US, it is essential to provide reasonable proof of the date of the first purchase at retail.

515 Busse Road
Elk Grove Village
Illinois 60007

Your request must be accompanied by reasonable proof of purchase, e.g. cancelled check, sales receipt, etc.

TECHNICAL DATA	BEOMASTER 2400
Amplifier Section	type 2902
Frequency response	20 - 20,000 Hz
Minimum continuous RMS power	30 watts per channel at 4 ohms 25 watts per channel at 8 ohms
Speaker impedance	4 or 8 ohms
Maximum total harmonic distortion	0.2%
Intermodulation	< 0.15%
Damping Factor	> 70
Input pickup low impedance	3 mV/47 kohms
Tape recorder	220 mV/470 kohms
Signal-to-noise ratio pickup	> 60 dB
Tape recorder	> 65 dB
Channel separation 1000 Hz	> 56 dB
250 - 10,000 Hz	> 38 dB
Output tape recorder DIN	225 mV at 10 kohms
Bass Control at 40 Hz	±18 dB
Treble Control at 12;500 Hz	± 15 dB
FM range	87.5 - 108 MHz
Sensitivity mono	< 19.2 dBf (2.5 μV/75 ohm)
Stereo	< 24 dBf (4.4 μV/75 ohm)
50 dB quieting sensitivity mono	< 18.5 dBf (2.5 μV/75 ohm)
Stereo	< 38.9 dBf (24 μV/75 ohm)
Maximum S/N ratio mono	> 70 dB
Stereo	> 66 dB
Frequency response mono-stereo	30 - 15,000 Hz ± 1.5 dB
Harmonic distortion mono 1000 Hz	< 1%
100 Hz	< 1%
6000 Hz	< 1%
Stereo 1000 Hz	< 1%
100 Hz	< 1%
6000 Hz	< 1%
Distortion at 50 dB quieting mono	< 5%
Stereo	< 1%
Stereo threshold	< 12 dBf (1.1 μV/75 ohm)
Stereo separation 1000 Hz	< 35 dB
100 Hz	< 29 dB
10,000 Hz	< 24 dB
Capture ratio	< 4.5 dB
AM suppression	> 50 dB
Adjacent channel selectivity	> 1 dB
Alternate channel selectivity	> 58 dB
Image rejection	> 69 dB
IF rejection	> 85 dB
Spurious rejection	> 87 dB
Other data	
Power Supply	117 volts AC 50 - 60 Hz
Power Consumption	25 - 185 watts
Dimensions H x W x D	62 x 6 x 25 cm
Weight	7.6 kg
Subject to change without notice	

YOU CAN ALSO OPERATE YOUR BEOMASTER 2400 IN THIS MANNER



To decrease volume, touch this symbol with a finger. The longer you touch it, the lower the level to which the volume will drop, and the left side of the indicator will increase in brightness relative to the right side.

To increase volume, touch this symbol with a finger. The longer you do so, the higher the level to which the volume will increase, and the right side of the indicator will increase in brightness relative to the left side.

Each time receiver is turned on, the volume will automatically adjust to the level you have preselected.

Warning: To prevent fire or shock hazard, do not expose this appliance to rain or moisture.

STAND BY. Turns off the receiver and the indicator light indicates that the receiver can be turned on again by touching one of the FM, record, or tape program symbols.

Preselected FM programs. For retuning of these, see next page.

Touch to play tapes.

Touch to play records.

To make tape recordings, activate the program you want recorded (1 to FM 5, or PHONO). The tape recorder should be operated as described in its operating instructions under "RECORD".